

Beef Industry to Take Center Stage at Upcoming Summer Tour in Little Falls

Early bird ticket price closes June 24 – purchase tickets today!

The 2025 Minnesota State Cattlemen's Association (MSCA) Summer Tour will take place on Tuesday, July 15, in Little Falls, Minnesota. This year's event is proudly hosted by the Mississippi Valley Cattlemen's Association, one of 21 local affiliates of the MSCA. The tour promises a full day of agricultural insight and community connection.

Mississippi Valley Cattlemen's Association is thrilled to showcase farms and businesses in their local area.

"We are delighted to welcome everyone to central Minnesota for this year's cattle tour," says Mississippi Valley Cattlemen's Association President Darv Keehr. "Our association is proud to sponsor this event, and we have organized a fantastic lineup of stops for attendees to explore."

Tour headquarters will be based at the Morrison County Fairgrounds, serving as the launch point for visits to several outstanding local farms and agribusinesses. Featured stops on the tour include:

- Barrett Petfood
- Kathrein Farms
- Smude's Angus Farms
- Kaiser Farms
- Caughey Cattle Co.
- Zapzalka Farms

Purchase Tickets

Don't miss this opportunity to network, learn and experience the Minnesota cattle industry firsthand. Tickets to attend Summer Tour are on sale now! General admission is \$25, and students get in for free. To purchase a ticket or to learn more about the tour, visit

mnsca.org/summer-tour. Purchase tickets today to ensure you receive the early bird pricing. Prices go up June 24.

MSCA Quarterly & PAC Event

Heading to Little Falls on Monday, July 14? Be sure to stop out to Rice Creek Hunting & Recreation for the MSCA Quarterly Meeting and Political Action Committee (PAC) Event!

The MSCA Quarterly Meeting will be held from 11 a.m.-3 p.m. at Rice Creek Hunting & Recreation on July 14. Immediately following the meeting, folks can shoot clays if interested. Recommended to bring your own gun and shells but can rent a gun and purchase shells there as well. \$28.25 per round of 50 targets.

The annual MSCA PAC Event will begin with registration at 4:30 p.m. at Rice Creek Hunting & Recreation. Corn hole tournament and silent auction begins at 5:30 p.m., and a beef and pheasant dinner will be served at 6:30 p.m. This event is \$40 per person for dinner & drink ticket and \$10 for a corn hole team. Silent auction donations are appreciated.

The MSCA PAC is designed to raise funds for legislators that support the cattle industry. All PAC Event donations will go towards the MSCA PAC fund.

For more information about the tour and to register, visit mnsca.org/summer-tour. To read more about each Summer Tour stop, turn to pages 12 and 13.

MSCA

MSCA is a grassroots organization consisting of over 20 local cattlemen's groups, providing the greatest opportunity for producer input and policy recommendations



Minnesota State Cattlemen's members, did you know you can pay your local affiliate dues online? Use the link below to renew your membership for the state and local association!

<https://www.mnsca.org/become-a-member/membership-application>

1. Central Minnesota Cattlemen	12. Mower County Cattlemen
2. Cottonwood Cattle Producers	13. Murray County Cattlemen
3. Three Rivers Cattlemen	14. Northwestern Stockmen
4. Fillmore County Cattlemen	15. Redwood Area Cattlemen
5. Freedom County Cattlemen	16. Rock-Holles Cattlemen
6. Glacial Ridge Cattlemen	17. Snake River Cattlemen
7. Houston County Cattlemen	18. South Central Cattlemen
8. Le Sueur County Area Cattlemen	19. Southeast Cattlemen
9. Midwest Cattlemen	20. Tri-County Cattlemen
10. Minnesota Cattlemen	21. Wabasha County Cattlemen
11. Mississippi Valley Cattlemen	22. West Central Cattlemen
	23. Pipestone Cattlemen

South Dakota Stockmanship and Stewardship Event Opens for Registration

Registration is now open for a Stockmanship & Stewardship event, June 26-28, in Watertown, South Dakota. Funded in part by the Beef Checkoff, Stockmanship & Stewardship is a unique educational experience for cattle producers featuring low-stress cattle handling demonstrations, Beef Quality Assurance (BQA) training, facility design sessions and industry updates.

During the event, producers can become BQA certified, network with fellow cattlemen and women, participate in hands-on demonstrations led by industry experts including Curt Pate and Dr. Ron Gill and learn innovative handling techniques. Topics including biosecurity and

grazing management will be discussed, and NCBA CEO Colin Woodall will be the keynote speaker.

"Cattle handling and stockmanship are core components of BQA," said Dr. Ron Gill, Texas AgriLife extension specialist. "Animal handling and care directly connect to improved success and profitability of operations."

Stockmanship & Stewardship is sponsored by the NCBA, Neogen and the Beef Checkoff-funded Beef Quality Assurance program. The goal of the event is to give cattle producers access to valuable resources, which aligns with Neogen's mission to provide innovative solutions to enhance animal care, performance and pro-

ductivity within the cattle industry.

"To us, it is a relationship that is worth being a part of," says Dr. Kirk Ramsey, Professional Services Veterinarian with Neogen. "It is an opportunity to promote good cattle handling and be part of making the industry what it needs to be."

For more information, agenda, fees and to register, visit www.StockmanshipAndStewardship.org. Cattle producers attending Stockmanship & Stewardship are eligible for reimbursement through the Rancher Resilience Grant. To apply for a grant to cover registration costs and two nights hotel, visit www.ncba.org/producers/rancher-resilience-grant.

PRESORTED STD
US POSTAGE
PAID
Detroit Lakes, MN
Permit No. 14

NEWS - TIME SENSITIVE MATERIAL



KAITLYN ROOT
Executive Director
Office: 763-479-1011

Happy summer, everyone!
The 2025 Minnesota Legislative Session wrapped up in May, and we have good news

for producers impacted by elk damage and wolf depredation. Thanks to strong advocacy and support, the ag finance bill includes an increase of \$350,000 over the next two years for both the elk damage and wolf depredation compensation programs, administered by the Minnesota Department of Agriculture.

It's always a win when agriculture is prioritized at the Capitol and real support reaches producers on the ground.

As summer heats up, so does our calendar of events. You'll find plenty of details about

the upcoming MSCA Summer Tour elsewhere in this publication, so I won't repeat them here, but I do strongly encourage you to attend. It's a great opportunity to connect with fellow producers, learn and enjoy the day.

Another event worth marking on your calendar is the Sustainable Ranchers Tour, hosted at Clear Springs Cattle Co. in Starbuck, Minnesota, on July 23-24. This event is part of a five-state tour highlighting producers who are leading the charge in regenerative and sustainable beef production.

Attendees will hear firsthand from ranchers applying regenerative practices and tackling the day-to-day challenges of modern cattle operations. There will also be a Beef Quality Assurance training on July 23.

The event is free and a valuable chance to connect, learn and grow. Don't miss it – register now at <https://www.trustinbeef.com/sustainable-ranchers-tour/>.

Stay safe out there, and have a productive summer!



JAKE THOMPSON
President

Hello, fellow cattlemen and cattlemen,

The Minnesota State Cattlemen's Association Summer Tour is an annual event that brings together cattle producers, industry professionals and agricultural experts from across the state to explore innovative practices, new technologies and the latest trends

in the beef industry. Organized by the MSCA, the tour serves as a critical platform for sharing knowledge, fostering collaboration and strengthening the network of beef producers in the state.

For those who are involved in the cattle industry, attending the tour offers a unique opportunity to gain insights into best management practices, cutting-edge research and real-world solutions to common challenges faced by ranchers.

One of the key benefits of being a member of the MSCA is the access it provides to this and other valuable events. Membership helps cattle producers stay connected with their peers and with industry leaders who are shaping the future of beef production.

By attending the tour, members are exposed to new ideas

and strategies that can be directly applied to their operations. Whether it's learning about sustainable feedlot management, advancements in animal health or the latest developments in beef marketing, the tour is an invaluable educational experience.

Membership in the MSCA also means having a voice in the legislative and regulatory issues impacting the beef industry. The association works on behalf of its members to advocate for policies supporting the long-term viability of cattle farming in Minnesota.

As a member, producers are kept informed about changes in state and federal policies, including updates on environmental regulations, trade agreements and animal welfare standards. This advocacy ensures that the needs and con-

cerns of Minnesota cattle producers are represented at the local, state and national levels.

Moreover, the MSCA provides a strong sense of community, offering networking opportunities that allow members to connect with others in the industry, share experiences and collaborate on solving challenges. By being a part of the association, producers gain access to resources, discounts and services that can enhance the efficiency and profitability of their operations. Ultimately, being a member of the MSCA is about being part of a collective effort to strengthen the state's beef industry while staying informed and empowered in an ever-evolving market.

I hope to see you in Little Falls, July 14-15, for the PAC event and summer tour.



RACHEL GRAY
President-Elect

Hello from northern Minnesota,

As I write tonight, we are getting our first soaking rain in almost a month, a much-needed break from the heat and the smoke. We have been very dry in my part of the state, and it certainly has

been hard on pastures.

In our area, the corn is planted, and most of it has come up. I am seeing beans growing, and this little shot of rain should make the crops look good. The cattle are all out on pasture, and we are noticing that while the pasture is shorter than last year, we feel the feed value is better.

The large amounts of rain last year seemed to make the grass washy. This year, the grass is of better quality. The dry cycle that we are in has prompted us to take out our drought plan that we developed after 2021.

We have started looking over the plan and adjusting as needed. We are getting pre-

pared in case we continue to miss the much-needed rains. Our drought plan includes picking a pasture to stop grazing in, buying some extra commodities and meeting with our nutritionist to make a ration based on available feed.

We are making sure that we are spreading the breeding groups of heifers out so that we are not watering all the heifers on one well. We learned in 2021 that we were not prepared enough for drought, and so we sat down and put a pen to paper and came up with a plan. As always, we need to change things, but I feel like we will be in better shape if the dry weather continues.

As you look forward to summer activities, I hope that you are making plans to attend the MSCA Summer Tour in Little Falls. It's shaping up to be a great tour with some interesting stops. If you have not registered already, make sure to check out the website.

Also, be sure to check out the events offered by the Minnesota Grazing Lands Conservation Association. Their events focus on grazing cattle and are offered at locations throughout the state. Their Roots and Rotation series provides a variety of topics and locations. Information can be found on their website.

I hope to see you in July on the tour.

Minnesota State Cattlemen's Association

PO Box 12
Maple Plain, MN 55359
763-479-1011
www.mnsca.org
mnsca@mnsca.org

Executive Committee

President - Jake Thompson

Barnesville, MN 56514
(218) 329-9293, fourhillfarms2@yahoo.com

President-Elect - Rachel Gray

Blackduck, MN 56630
(218) 766-4929, ltimber1616@gmail.com

Vice President - Eric Zeltwanger

Morris, MN 56267
(320) 766-0066, ericzcattle@gmail.com

Past President - Grant Breikreutz

Redwood Falls, MN 56283
(507) 430-0607, gdbreikreutz@hotmail.com

Cow-Calf Council Chair - Dustin Wiese

Pequot Lakes, MN 56472
(218) 537-0096, dustinwiesefwr@gmail.com

Feeder Council Chair - Dallas Knobloch

Hills, MN 56138
(507) 227-1304, daknob@alliancecom.net

Legislative Chair - Krist Wollum

Porter, MN 56280
(507) 530-3854, kkwollum@yahoo.com

Membership / Industry Relations Chair - Angie Ford

Stacyton, MN 56172
(507) 360-7937, mnscamembership@gmail.com

Secretary/Treasurer - Kevin Hoge

Aitkin, MN, 56431
(218) 549-3337, flatrock@frontiernet.net

Business Director & Accounting - Heather DeLong

Maple Plain, (763) 479-1011

Executive Director - Kaitlyn Root

Maple Plain, kaitlyn@mnsca.org
Office: 763-479-1011

MSCA Regional Directors

Region - 1 James Widner

Strandquist, MN 56758
(218) 991-2210, james.widner@hotmail.com

Region - 2 & 3 Eric Nolte

Sebek, MN 56477
(218) 539-0124, hiddenangus@gmail.com

Region - 4 Mark Schoenfeld

Dawson, MN 56232
(612) 325-4001, circlesc@hotmail.com

Region - 5 Darv Keehr

Little Falls, MN 56345
(320) 630-6337, dkeehr@brainerd.net

Region - 6 Ryan Anderson

Aitkin, MN 56431
(320) 364-0355, royalempireangus@gmail.com

Region - 7 Ryan Vos

Hadley, MN 56151
(507) 227-2188, ryanvosfarms@gmail.com

Region - 8 Ruth Hoefs

Le Center, MN 56057
(612) 756-1500, rashoefs@gmail.com

Region - 9 Chris Miller

Mabel, MN 55954
(507) 458-7776, viewlawn1@gmail.com

Minnesota Cattleman

THE MINNESOTA CATTLEMAN® newspaper is the official publication of the Minnesota State Cattlemen's Association. "THE MINNESOTA CATTLEMAN®" is published on a contract basis 6 times per year and is provided to all MSCA members. Minnesota Cattleman Publications reserve the right to decline paid advertising that is not consistent with the goals and objectives of the Minnesota State Cattlemen's Association.

For Advertising Contact:

Kaitlyn Root, kaitlyn@mnsca.org,
763-479-1011

Post Master Send Address

Corrections to:

Minnesota Cattleman Publications
PO Box 12 • Maple Plain, MN 55359

CHECK US OUT ON THE WEB AT www.mnsca.org



ROSEMARY GUSTAFSON

We're just a few short weeks away from our 2025 Summer Event – Education, Tours, Banquet & MN State Beef Ambassador Competition – and we can't wait to welcome you on June 20th in Waite Park! It's shaping up to be one of our best events yet, packed with opportunities to learn, connect and celebrate.

The day begins with a choice of two dynamic morning breakout sessions:

- Option one includes a focused discussion on cattle nutrition with Carson McMullen and Dr. Steven Dudley, DVM of Profectus Livestock Nutri-

tion, offering practical tools for herd health and animal nutrition. This is followed by Aaron Eliason; Redmond Minerals, "Simplifying the Mineral Program on Your Farm."

- Option two is the 34th Annual Minnesota State Beef Ambassador Competition, where you're invited to attend the youth presentation and advocacy training portion. These young leaders never fail to impress — and your support means everything.

After the morning session we'll head out to Dennis Traut Farms in Sartell for lunch, a farm and field tour, a round-table discussion and a hands-on deeper dive into hay testing and ration balancing — real, applicable knowledge you can take home to your own operation led by Bryant Johnson from Archer Daniels Midland.

From there, we'll move into the evening with a social hour, followed by a steak supper and awards banquet, where we'll honor leaders, youth and partners who make our industry stronger.

Thank you, 2025 Beef Alliance Members

THANK YOU to the following businesses that have committed to support members of the Minnesota State Cattlemen's Association as a part of the Minnesota Beef Alliance Program for 2025. If you are interested in learning more about the Beef Alliance program, contact Angie Ford at mnsccamembership@gmail.com.

Prime

American Foods Group*
Carlson Wholesale
Merck Animal Health*
Minnesota Beef Council
Roto-Mix
Form-A-Feed
Producers Livestock Marketing Association
AgCountry Farm Credit Services
Boehringer Ingelheim

Choice

Minnesota Corn Growers Association
Zoetis

Select

ADM
Kent Nutrition Group
Centra Sota Cooperative
Artex Manufacturing
Minnesota Farm Bureau
Professional Ag Marketing
Purina Animal Nutrition
Northwest Lighting Systems
Dry Creek Ranch Trucking, Inc.

Presidential

CKP Insurance
Wieser Concrete Products



* Indicates giving above base level for that category!

We especially want to thank the Minnesota State Cattlemen's Association for sponsoring the Beef Ambassador Achievement Award Top Scholarship. Your support plays a critical role in lifting up our next generation — and we hope you'll join us at the banquet to celebrate the scholarship winner in person.

Registration is open to every-

one — not just CattleWomen! We've designed this event to be family-focused and multigenerational, so bring the whole crew and make it a day to remember.

See the full agenda and register now at www.mnccattlewomen.org/events.

Outside of this exciting day, we're continuing to grow our

Webinar Learning Library.

Coming in August, we'll be hosting a session on "Marketing Your Calf Crop: How to Improve

Your Price and Approach." It's one you won't want to miss.

Thanks for your partnership, and we hope to see you on June 20th!

Upcoming Events/Important Dates:

For more details on events listed below, visit www.mnsca.org.

Monday, July 14 – MSCA Quarterly Meeting & PAC Event – Rice Creek Hunting, Little Falls, MN

Tuesday, July 15 – Summer Tour – Little Falls, MN

August 5-7 – Farmfest – Redwood Falls, MN

December 5-6 – Minnesota Cattle Industry Convention and Trade Show – River's Edge Convention Center, St. Cloud, MN



DALLAS KNOBLOCH
MSCA FEEDER CHAIR

Hello to all the cattlemen and women across the state involved in the beef industry.

Summer is upon us, and we turn our focus to projects, building a year's supply of feed, extra farm help, vacations and summer fun. In the southwest corner of the state, the crop went in fast and for the most part is looking good. We have had some nice rain this spring to get the grass and crops going and will need timely rain throughout the growing season due to the lack of soil moisture.

The cow herd is content grazing green grass and it's always fun watching the calves grow. We have begun to market the western fall calves, and what a market it is.

Cash has been traded at the end of May at \$370 in the meat and \$234 live. What a steady progression all the way through spring.

Cattle continue to be pushed back, and carcass weights continue to stay at all time highs. The tight supply of feeder cattle, the low cost of gain and high price of fats makes this an easy decision.

The top seems to have been guessed many times in the past 12 months, and we just keep heading higher. Stay diligent in your marketing and mindful of the price levels we are at.

I have seen more and more cases where we seem to have forgotten what has gotten us to these levels. The consumer has asked for a quality and great tasting product, and we have delivered.

As producers, we may lose sight of that and in this current market deliver a product that does not meet the consumers' specs. So being mindful of carcass weights, how they are boxed and cattle that carry excess fat will be important.

We look forward to seeing you all at the MSCA Summer Tour this July in Little Falls. We certainly appreciate all the hard work of planning and preparing this great event and attending is a good way to say thank you.

Meeting other cattle producers and building relationships is an ever-vital part of our business. Be sure to be involved in local and state organizations that promote our products and keep our industry thriving. Together, our efforts do make a difference.

We wish all of you a great summer, and remember to choose BEEF for a healthy and delicious meal at all those summer grill outs!



ERIC ZELTWANGER
Vice President

Greetings, fellow cattlemen!

As I write this in the first week of June, we have just finished up moving pairs off to grass, planting the last of the edible beans and hoping for a slow soaking rain. I also just looked at a calendar and saw some great upcoming events for MSCA.

MSCA Summer Tour and Quarterly Meeting/PAC Event are right around the corner. The tour this year will be held July 15, in Little Falls, Minnesota. The PAC event and the quarterly meeting are Monday, July 14. Both of these events are something I look forward to as a time to get together with fellow producers, visit and see what they do in their area that I can maybe use in mine.

It always amazes me at what I can pick up visiting with fellow producers just shar-

ing about our operations. The PAC event on Monday night is a great way to raise funds to help us support the candidates that support us in legislation.

Back to cattle — what an AMAZING time to be in this business! No one has ever seen prices where they are and most of us didn't think it was possible. I, for one, am glad to see cattlemen across the board being compensated well for the long hours and hard weather we deal with.

Whether it is COLD winters or HOT summers, we do it day in and out because we love it!

We have some of the normal regulatory headwinds to push through coming soon. In my opinion, certain agencies and activists oftentimes seem to be looking for ways to make our lives harder.

There are meetings scheduled in June for information on updating the 7020 Feedlot Rules in Minnesota. Visit MPCA's website to find these meetings and attend one in your area.

We need to support our PAC fund and keep sensible people helping to watch out for us. Lord knows not all of us want to be in politics.

Hope to see you all in Little Falls on the 14th and 15th!

As always, I hope your cows stay fat and your calves are heavy!



Minnesota Academy of Nutrition Dietetics Conference



Each year, the Minnesota Beef Council (MBC) participates in the Minnesota Academy of Nutrition and Dietetics (MAND) Conference to connect with nutrition professionals from across the state. This year's event took place on Friday, April 11, at the Eagan Community Center. MBC Communications Director Ashley Wulf represented the Council and engaged with a wide

range of aspiring registered dietitians and health professionals focused on improving client well-being. The Council's booth featured a variety of educational materials, with a special emphasis on beef's role as a nutritious, high-quality protein—encouraging attendees to consider beef as part of a healthy, balanced diet for their patients and clients.

Twin Cities Live



The Minnesota Beef Council makes a monthly appearance on Twin Cities Live, a TV show airing daily from 3-4 p.m. CST on KSTP, Channel 5-Eyewitness News, and is rebroadcasted late in the evening. At the end of April, Communications Director, Ashley Wulf, featured festive taco recipes on-air in light

of Cinco de Mayo. For May, MBC Chief Executive Officer, Kelly Schmidt, featured two different beef grilling recipes, fitting for this summer season. You can find the recorded segments along with recipes and a grocery lists on our Facebook page and on our website at mnbeef.org.

FACS to the Max

FACS to the Max, a Family Consumer Science (FCS) Education Workshop, was held this year in the Department of FCS at Minnesota State University, Mankato on Friday, April 25. The participants were FCS educators from high schools and middle schools throughout the state of Minnesota as well as pre-professional college FCS students and other related professionals. The Minnesota Beef Council hosted an informational table, creating a valuable opportunity to engage directly with FCS teachers. Staff shared beef-focused resources and information to support educators as they teach the next generation how to confidently cook with beef.

Forest Lake Ag Day

On Friday, May 9, the Minnesota Beef Council joined other commodity groups at Forest Lake Ag Day, hosted by Forest Lake High School. The Council set up an interactive booth featuring a "spin the wheel" game that quizzed students on beef knowledge and rewarded them with fun giveaways. Forest Lake FFA members also played a key role in serving beef sandwiches to hundreds of students—made possible through funding from the Local Producer Promotion Program. This event underscored the value of bringing beef education to young consumers, especially in urban communities.

Urban Ag Day

The 2025 Urban Ag Day was held at the Minnesota State Fairgrounds on May 12-14. This event, hosted by the Minnesota State Fair, is an educational event where hundreds of third graders from metro schools come to the Minnesota State Fairgrounds to learn about agriculture and get a connection to where their food comes from. The Minnesota Beef Council is a sponsor of

the event and helped in grilling beef burgers and serving lunch to all the students and volunteers. Each attendee is provided with a cheeseburger lunch. The grilling is executed by the West Central Cattlemen's Association. This is a great event to teach kids about agriculture and serve them a tasty, nutritious lunch that they will enjoy. It is a fantastic way to reach our future beef consumers.

MBC Summer Intern



Ella DeFrang

The Minnesota Beef Council (MBC) is pleased to welcome Ella DeFrang as the Summer 2025 Communications Intern. Each year, MBC selects a communications intern to assist in promoting beef, supporting Minnesota cattle farmers and gaining hands-on experience in the agricultural communications field.

The summer internship program provides students with valuable, hands-on experience in agricultural communications and advocacy. The main project of the intern is to coordinate and manage the Minnesota Beef Council's presence at the Minnesota State Fair during the 12 days with a booth in the Dairy Building. Other opportunities

the intern may partake in include social media and digital content efforts, videography and photography projects, and assisting with educational and outreach initiatives that help raise demand for beef and strengthen the Minnesota beef industry.

Hailing from Zumbrota, Minnesota, Ella brings with her a strong agricultural background and a deep-rooted passion for the beef industry. She grew up showing beef cattle at local jackpot shows and fairs across the state, developing a first-hand appreciation for the commitment and care of Minnesota's beef producers.

Ella will be a junior this upcoming fall at the University of Minnesota, pursuing a degree in agricultural communication and marketing with a minor in animal science. On campus, she is actively involved as the vice president of the Block and Bridle Club, the publicity and photo chair for Beta of Clovia Sorority, a member of the Agricultural Education, Communication & Marketing (AECM) Club and a

student planner for the Minnesota Junior Spring Classic. She also works as a student employee at the Andrew Boss Laboratory of Meat Science and the College of Food, Agricultural and Natural Resource Sciences (CFANS) Advising Center.

"I'm eager to contribute to the Minnesota Beef Council's efforts in promoting beef and advocating for Minnesota's cattle farmers," Ella says. "I'm honored to be part of the Minnesota Beef Council team this summer and look forward to the great experiences ahead."

Ella began her internship on May 19 and will be with the Council through Labor Day, Sept. 1. Throughout the internship, she can be reached at intern@mnbeef.org or (763) 479-1011.

Minnesota State FFA Convention

The Minnesota State FFA Convention brought together FFA chapters from across the state, creating a dynamic opportunity to connect with future agricultural leaders. On April 28, the Minnesota Beef Council participated with an interactive booth where students could spin the wheel, answer beef-related questions and win fun giveaways. The booth drew an enthusiastic crowd, with hundreds



of students eager to learn more about beef and its role in agriculture.

MBC Board Meeting

The next Minnesota Beef Council Board of Directors Meeting is scheduled for Monday, July 14, 2025. The meeting will be held in Little Falls, MN.

Minnesota Beef Council Events

- May 31 – June 1, 2025 | GrillFest (CHS Field, St. Paul, MN)
- June 20, 2025 | Back to the 50's Ladies Showcase (North End Event Center, Falcon Heights, MN)
- July 15, 2025 | Summer Tour (Little Falls, MN)
- July 21 – August 5, 2025 | TCL 12 Days of Grilling (KSTP Studio, St. Paul, MN)
- July 23 – 24, 2025 | Trust in Beef (Starbuck, MN)
- August 5 – 7, 2025 | Farmfest (Morgan, MN)
- August 21 – September 1, 2025 | Minnesota State Fair (Minnesota State Fairgrounds, Falcon Heights, MN)



DUSTIN WIESE
MSCA COW/CALF CHAIR

Hello, readers!

Once native to much of Minnesota, elk were depleted from the region by the late 1800s. By 1893, elk hunting was banned statewide and would remain so until 1987.

Today, there are now three elk herds living in the state: the Grygla herd in Marshall

County, the Kittson-Central herd in Kittson County, and the Caribou-Vita subgroup, located near the Minnesota-Canada border.

Now, following direction and funding from the Minnesota Legislature's 2023 session, the DNR is working with the Fond du Lac Band to restore elk to the Fond du Lac Reservation and surrounding areas.

While these efforts have been met with enthusiasm by conservationists and wildlife advocates, the expansion of elk herds raises serious concerns among cattle producers. Key issues include disease transmission, forage competition and liability risks, all of which threaten the livelihood of those in the cattle industry.

One primary concern is the risk of disease transmission,

particularly from liver flukes and brucellosis. Cattle producers in northeastern Minnesota fear that the presence of elk could introduce or spread diseases to their herds, endangering livestock health and farm viability.

Another critical issue is forage competition. While estimating crop losses from elk is relatively straightforward for row crops, it's much harder to measure losses in forage production, whether that be pasture or hay. How the DNR will evaluate these losses and fairly reimburse producers remains a major concern.

Liability is also a significant worry. If elk were to damage a fence and cause cattle to escape onto a highway, who would be held responsible? Even if the DNR accepts liability, produc-

ers wonder how they would prove elk caused the damage once the evidence is trampled by the cattle. Furthermore, the cost of repairing damage and implementing wildlife-proof fencing can impose a significant financial burden to producers.

Because of these concerns, the MSCA has been at the forefront of discussions with the DNR, ensuring that cattle producers' voices are heard and addressed.

This is exactly where membership to the MSCA proves valuable. The MSCA has been a prominent voice at the table regarding elk herd expansion. In May, I, along with other MSCA members, met with representatives from the DNR, the Fond du Lac Band and the Minnesota Department of Agriculture to share cattle producers' concerns

before elk are released in the Cloquet area early next year.

Additionally, the MSCA has continuously lobbied for increased funding for elk and wolf depredation, which was successfully increased as part of the agriculture bill in the 2025 Minnesota Legislative Session.

The reintroduction of elk to northeastern Minnesota represents a promising conservation success, restoring a species once lost to the landscape. However, from the perspective of a cattle producer, it brings legitimate concerns.

Navigating these challenges will require collaboration and mutual understanding to balance wildlife recovery with the sustainability of agricultural livelihoods.



2025

**MINNESOTA STATE CATTLEMEN'S
SUMMER BEEF TOUR
JULY 15, LITTLE FALLS, MN**



**SAVE
THE
DATE**



**INVITES YOU TO JOIN US FOR THE
MINNESOTA BEEF INDUSTRIES PREMIER SUMMER EVENT!
COMFORTABLE COACH BUS TOUR INCLUDES BREAKFAST, LUNCH, STEAK DINNER, TRADE SHOW
AND 6 TOUR STOPS.**

BARRETT PETFOOD



SMUDE'S ANGUS FARM



CAUGHEY CATTLE CO.



KATHREIN FARMS



KAISER FARMS



ZAPZALKA FARMS LLC



**VISIT WWW.MNSCA.ORG TO REGISTER OR SCAN THE QR CODE
COST IS \$25, STUDENTS FREE!
TOUR BEGINS AT THE MORRISON COUNTY FAIRGROUNDS**





WHEN THE GOING GETS TOUGH
THE TOUGH
 DEPEND ON ARTEX



Family FARMER OWNED

proudly **MADE IN** 

A DIVISION OF **Farmers Union Industries** | **ARTEXMFG.COM** | **888-644-2893** |    



AMERICAN FOODS GROUP
 AmericanFoodsGroup.com





TOP PRICES PAID
For Your Cattle

HOLSTEIN STEERS • **BULLS** • FED COWS • **LEAN COWS** • DAIRY CROSS FATS

<p>American Foods Group KIMBALL, MN Tim Schiefelbein 320-398-2700 Holstein Contracting Dairy Cross Fats</p>	<p>Long Prairie Packing LONG PRAIRIE, MN Tyrel Lembke 651-256-6115 Bulls • Lean Cows</p>	<p>AFG - Hutchinson Buying Station HUTCHINSON, MN Ricky Schiefelbein 320-304-2346 Holstein Steers • Lean Cows Bulls • Fed Cows • Dairy Cross Fats</p>	<p>Green Bay Dressed Beef GREEN BAY, WI Dean Derricks 920-436-6529 Holstein Steers • Fed Cows Lean Cows • Dairy Cross Fats</p>	<p>Long Prairie Buying Station LONG PRAIRIE, MN Cody Ritter 320-293-5212 Brandon Van Havermaet 320-290-9220 Holstein Steers • Lean Cows Bulls Fed Cows • Dairy Cross Fats</p>
--	--	--	---	---

GLOBAL REACH, LOCAL EXPERTISE

A WORLD OF BULK LIVESTOCK FEED FROM ADM

ADM is your partner in quality bulk livestock feed, leveraging global and local expertise to deliver top products at competitive prices. Our extensive portfolio ensures you get the best for your livestock:

- Corn Protein Feed Pellets
- Wheat Middlings
- Golden Gluten™ WET FEED
- Modified Distillers Wet Grains with Solubles
- Wet Distillers Grain
- ADM Red Dog
- Liquid Gold™ HEAVY STEEPWATER
- Golden Distillers Dried Grains with Solubles

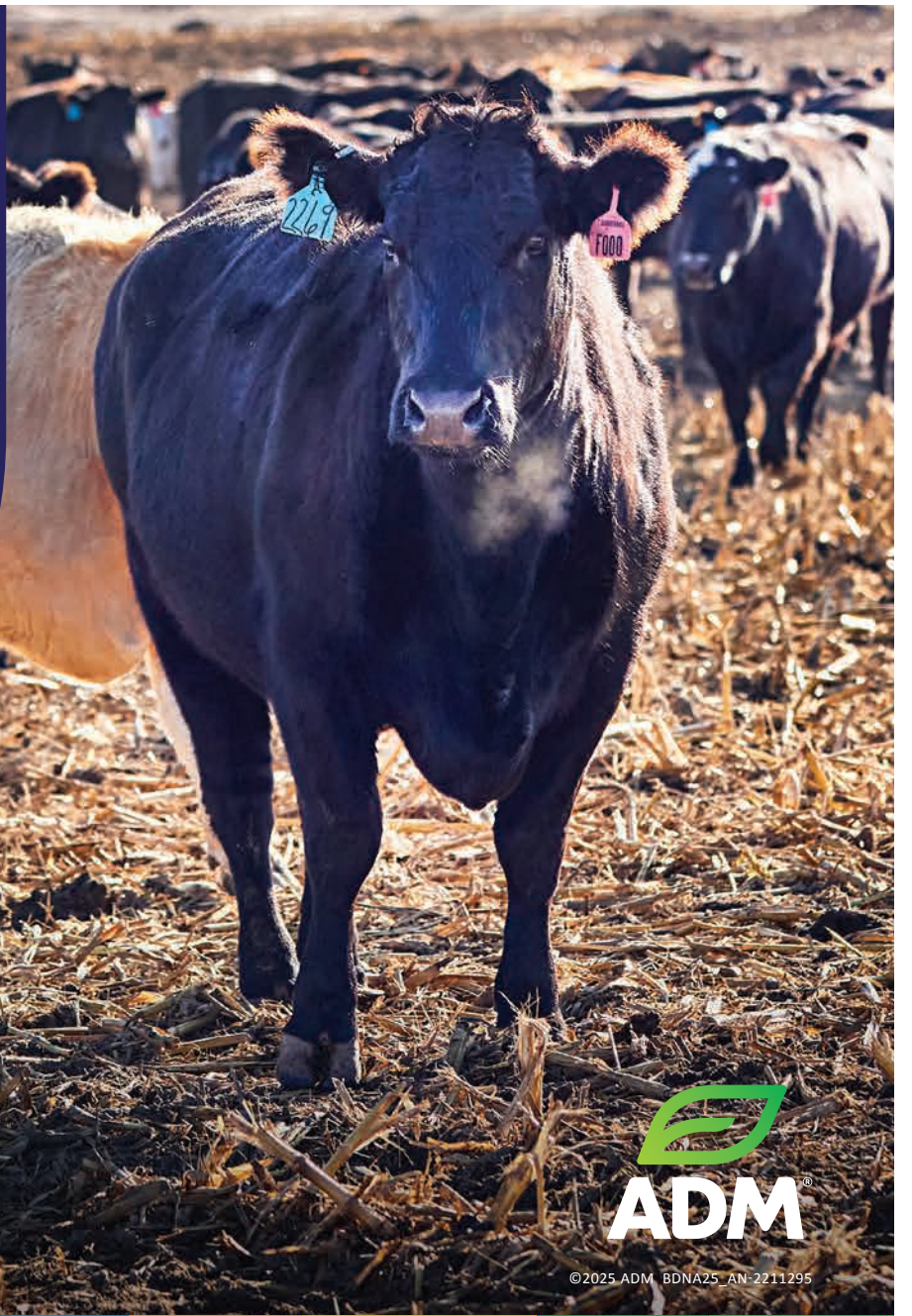
For further information on availability, pricing or any other requests, reach out to our team:

REGIONAL REPRESENTATIVE
Michelle Cornett
michelle.cornett@adm.com
+1 217-329-4480

CUSTOMER SERVICE
corncoorders@adm.com
+1 888-541-1062



© 2025 ADM. BDNA25_AN-2211295



PROTECT YOUR PROFIT

with our custom risk management strategies



MARKETING
402-597-9189



CREDIT
402-597-9189



COMMODITIES
712-274-0539

"It's like a Swiss Army knife. They have people to help you protect yourself from downside risk and leave upside, or, if the market isn't looking as strong, hedging."

ROB RIESSELMAN, CUSTOMER

PRODUCERS
Livestock
Marketing • Credit • Commodities

Offices in Nebraska & Iowa.
Agents across the Midwest.





FOCUSED ON LIVESTOCK. FOCUSED ON YOUR OPERATION

Unique operations need unique solutions.

Agriculture focused solutions to fit any size farm, ranch, or agribusiness. Get the customized financing and financial services you need by contacting your local AgCountry office.

- Land and equipment loans
- PRF and LRP insurance
- Cash patronage program
- Operating loans
- Succession and retirement planning

[AgCountry.com](https://www.agcountry.com)



Minnesota Farm Bureau

The mission of Minnesota Farm Bureau Federation (MFBF) is to ensure Minnesota's agricultural vitality. By engaging members, advocating at the grassroots level and spreading awareness about agriculture, we support farmers and ranchers.

Leadership Development



Agriculture Awareness



Grassroots Advocacy



Visit the Farm Bureau Booth at the Cattlemen's Summer Tour, July 15, to learn more about the Minnesota Farm Bureau and ways to get involved!

Email Us
info@fbmn.org

Visit Our Website
www.fbmn.org




Morrison County Farm Bureau®


Minnesota Farm Bureau®

Together, we grow awareness markets communities

Minnesota Corn is proud to support the Minnesota State Cattlemen's Association and together we can grow a stronger future for agriculture and the family farm.

Join us! A one-year membership is just \$75 and benefits include leadership and networking opportunities, a quarterly newsletter and more.

Together, we grow. **Learn more at mncorn.org.**



Choice Cuts

e.g. **OmniFount 2**

save
TIME

save
YOUR
BACK

save
MONEY

save
WATER



OmniFount 1

OmniFount 3

Living the Ritchie Life.

The choice of what to cut back on is part of living a busy life. Provide fresh water for your animals, and have more for the other things. See what owning a Ritchie automatic waterer can do for you at www.ritchiefount.com.

Partner to the American Cattleman since 1921.

Proud to be a sponsor of:



National Cattlemen's
Beef Association

Ritchie
Fresh Water
For Life™

Chad Carlson • 800-669-4038

MADE IN
AMERICA
SINCE 1921

NEWS BRIEFS

USDA to Provide \$1 Billion to Livestock Producers Impacted by Drought or Wildfire in 2023 and 2024

Assistance for Flood-Impacted Producers Coming Summer 2025

On May 20, U.S. Secretary of Agriculture Brooke L. Rollins announced the release of Congressionally mandated Emergency Livestock Relief Program (ELRP) payments to cover grazing losses due to eligible drought or wildfire events in 2023 and/or 2024. Secretary Rollins committed on May 7 to release these emergency payments by May 30, and on May 20 she delivered on that commitment ahead of schedule.

The U.S. Department of Agriculture's (USDA) Farm Service Agency (FSA) is leveraging existing Livestock Forage Disaster Program (LFP) data to streamline payment calculations and expedite relief. Emergency relief payments are automatically issued for producers who have an approved LFP application on file for 2023 and/or 2024.

The American Relief Act, 2025, provided funds for emergency relief payments. This program is the first of two programs authorized to assist with eligible losses suffered by livestock producers. FSA will announce additional ELRP assistance for other losses authorized by the Act, including flooding, later this summer.

ELRP Eligibility

ELRP payment eligibility requires livestock producers to have suffered grazing losses in a county rated by the U.S. Drought Monitor as having a D2 (severe drought) for eight consecutive weeks or a D3 (extreme drought) or higher level of drought intensity during 2023, 2024 or both calendar years, and have applied and been approved for LFP.

Additionally, producers whose permitted grazing on federally managed lands was reduced due to wildfire are also eligible for ELRP, if they applied and were approved for LFP in 2023, 2024 or both calendar years.

To streamline and simplify the delivery of ELRP benefits, producers are not required to submit an application for payment; however, they must have the following forms on file with FSA:

- CCC-853, *Livestock Forage Disaster Program Application*
- Form AD-2047, *Customer Data Worksheet*.
- Form CCC-902, *Farm Operating Plan* for an individual or legal entity.
- Form CCC-901, *Member Information for Legal Entities* (if applicable).
- Form FSA-510, *Request for an Exception to the \$125,000 Payment Limitation for Certain Programs* (if applicable). This form is required to be on file for both 2023 and 2024 to be eligible for the payment limitation exception.
- SF-3881, *Direct Deposit*.
- AD-1026, *Highly Erodible Land Conservation (HELC) and Wetland Conservation (WC) Certification*.

Most producers, especially those who have previously participated in FSA programs, likely have these forms on file. However, those who are uncertain and want to confirm the status of their forms, can contact their local FSA county office.

Producers in 28 MN Counties May Be Eligible for Assistance Through ELAP

USDA's Farm Service Agency (FSA) has determined that producers in 28 Minnesota counties who suffered livestock feed or grazing losses due to floods in 2024, may be eligible for feed transportation assistance through the Emergency Assistance for Livestock, Honey Bees and Farm-raised Fish Program (ELAP).

Eligible Minnesota counties are Blue Earth, Brown, Carlton, Carver, Cottonwood, Dakota, Dodge, Freeborn, Fillmore, Goodhue, Houston, Jackson, Le Sueur, McLeod, Meeker, Murray, Nicollet, Nobles, North St. Louis, Olmsted, Pipestone, Rice, Rock, Scott, Sibley, South St. Louis, Wabasha and Washington.

Because feed transportation eligibility has been extended for livestock producers in these eligible counties for 2024 losses, the Minnesota FSA is approved to act on late filed ELAP applications that meet all other program requirements.

Producers must submit a notice of loss, all other required program documentation and an application for payment to their local FSA office by March 2, 2026.

For more information regarding ELAP, producers can contact the county FSA Office or visit farmers.gov/recover.

Gov Walz Signs Ag Omnibus Bill Into Law

On May 23, Governor Walz signed Chapter 34, House File 2446, the Agriculture and Broadband Development Policy and Finance Bill, into law. The bill funds the Minnesota Department of Agriculture (MDA), Minnesota Board of Animal Health, and the Agricultural Utilization Research Institute.

Highlights include:

- Funds rural mental health and farm safety (\$200,000 in FY26/27, \$100,000 in FY28/29)
- Increases funding for wolf depredation claims (an additional \$175,000 between FY26 and FY 27) and elk damage claims (an additional \$175,000 between FY26 and FY27)
- Increases funding for Farm Business Management (an additional \$500,000 for a total of \$5 million in FY26/27)
- Increases funding for meat inspection services (an additional \$1.5 million in FY26/27)

The funding bill will take effect July 1, 2025. For more information, visit mda.state.mn.us/gov-walz-signs-ag-omnibus-bill-law.

NCBA Priorities Approved in House Reconciliation Bill

WASHINGTON (May 22, 2025) – Several key priorities championed by the National Cattlemen's Beef Association (NCBA) moved one step closer to becoming law when the U.S. House of Representatives passed their reconciliation bill on May 22. The bill includes key cattle health, disaster recovery and tax priorities crucial to the success of America's cattle farmers and ranchers.

"Cattle farmers and ranchers need Congress to invest in cattle health, strengthen our resources against foreign animal disease, support producers recovering from disasters or depredation and pass tax relief that

protects family farms and ranches for future generations," said NCBA President and Nebraska cattleman Buck Wehrbein. "Thankfully, this reconciliation bill includes all these key priorities. NCBA was proud to help pass this bill in the House and we will continue pushing for these key policies until the bill is signed into law."

The reconciliation bill includes provisions that are crucial to the success of cattle producers and will:

Reimburse cattle producers for loss due to depredation by federally protected predators.

Expand access to the livestock forage disaster program for producers experiencing drought.

Continue funding the feral swine eradication program.

Bolster the "three-legged stool" that protects the cattle industry from foreign animal disease, including the National Animal Disease Preparedness and Response Program (NADPRP), the National Animal Health Laboratory Network (NAHLN), and the National Animal Vaccine and Veterinary Countermeasures Bank (NAVVCB). The NAVVCB currently houses emergency supplies for responding to a foot-and-mouth disease outbreak.

Additionally, the bill includes key NCBA tax priorities that protect the legacy of family farms and ranches for future generations, such as:

An increase to the estate and gift tax exemption amounts to \$15 million per individual and \$30 million per couple, adjusted for inflation annually. The package also makes this exemption permanent.

Preserved stepped-up basis.

A permanent increase to the Section 199A Small Business deduction from 20% to 23%.

Expanding the limitation on Section 179 expensing from \$1 million to \$2.5 million.

Reinstating the 100% bonus depreciation for five years.

Extending the Federal Disaster Tax Relief Act of 2023.

"The National Cattlemen's Beef Association extends our gratitude to all the members of Congress who voted yes on this reconciliation package," said NCBA Senior Vice President of Government Affairs Ethan Lane. "America's farming and ranching families sorely need the provisions in this bill to succeed. We strongly urge the Senate to swiftly pass this bill and deliver a win for our nation's cattle producers."

Blomgren Appointed as MN USDA FSA State Executive Director

WASHINGTON, May 27, 2025 — The Trump Administration recently appointed Kurt Blomgren as the new State Executive Director (SED) for the USDA Farm Service Agency (FSA) in Minnesota. Blomgren joined the Minnesota FSA team on May 5.

"When America's farming communities prosper, the entire nation thrives. This new group of USDA appointees will ensure President Trump's America First agenda is a reality in rural areas across the country. I am grateful for the leadership of these new state directors and look forward to their work reorienting the agency to put Farmers First again," said Agriculture Secretary Brooke Rollins.

"FSA State Executive Directors serve in a critical role carrying out USDA's mission at the state level — ensuring that our focus is on meeting the needs

CHECK US OUT ON THE WEB AT www.mnsca.org

NEWS BRIEFS

of local agricultural producers by putting farmers and ranchers first,” said FSA Administrator Bill Beam. “Rural communities need our support now more than ever. Our newly appointed state leaders bring a wealth of knowledge and expertise to their position as SED and they will play an integral role in shaping the future of agriculture in their state.”

Blomgren is a fourth-generation family farmer from Butterfield, Minnesota, currently operating a diversified crop and livestock farm with his son Vance and family. For 27 years, Blomgren has been a member of the Minnesota Farm Bureau. He has served on the Watonwan County Farm Bureau board of directors, served for three years on the Minnesota Young Farmers and Ranchers Committee and was a member of the State Resolutions Committee. In his local community, he is a volunteer firefighter, Sunday school teacher and mentor to local urban youth who have livestock projects at his farm.

As SED, Blomgren is responsible for overseeing the delivery of FSA programs to agricultural producers in Minnesota. These commodity, conservation, credit and disaster assistance programs ensure a safe, affordable, abundant and nutritious food, fiber and fuel supply for all Americans. See USDA news release for full list of recent FSA and Rural Development appointees.

FSA helps America’s farmers, ranchers and forest landowners invest in, improve, protect and expand their agricultural operations through the delivery of agricultural programs for all Americans. FSA implements agricultural policy, administers credit and loan programs, and manages conservation, commodity, disaster recovery and marketing programs through a national network of state and county offices and locally elected county committees. For more information, visit fsa.usda.gov.

WPA Haying Opportunities

The Morris Wetland Management District is offering, to all eligible applicants, an opportunity to enter into a Cooperative Agricultural Agreement (CAA) to conduct haying on 14 WPAs in the following five counties of west central Minnesota: Big Stone (4 Units), Lac qui Parle (2 Units), Pope (3 Units), Stevens (3 Units), and Swift (2 Units). Haying will be used to manage the grassland habitat and improve conditions for nesting waterfowl. Hay units range in size from approximately 13 acres to 113 acres. Deadline for sealed bids is 1:00 p.m., Monday, June 23, 2025.

Stop in at the office or contact J.B. Bright at 320-391-6688 or jb_bright@fws.gov for more information about specific sites and to request bid materials by mail or email.

Sealed bids may be mailed, emailed or hand delivered to the Morris WMD, 43875 230th St., Morris, MN, 56267. Bidders will be notified of results by C.O.B. June 24th.



MPCA to Amend 7020 Feedlot Rules Public comment period open & informational sessions to be held.

The Minnesota Pollution Control Agency (MPCA) is proposing to amend existing Minnesota Rules Chapter 7020 governing animal feedlots. The last major revision of Minnesota feedlot rules took place in 2000.

This is a multi-year process, and the first step in this process is for the MPCA to provide information and to accept comments.

Comments are open on the animal feedlots rule until 4:30 p.m. on July 22, 2025. MPCA is also hosting informational sessions in June for the public to attend.

June sessions include:

June 3, 2025, 9:30 - 11:30 a.m.

Location: Hinckley Community Center

June 3, 2025, 1:30 - 3:30 p.m.

Location: Morrison County Government Center

June 4, 2025, 9 - 11 a.m.

Location: Morris research center - University of Minnesota West Central Research & Outreach Center

June 4, 2025, 2 - 4 p.m.

Location: Detroit Lakes campus - Minnesota State Community and Technical College

June 5, 2025, 9:30 - 11:30 a.m.

Location: Heritage Community Center, Thief River Falls

June 5, 2025, 2 - 4 p.m.

Location: Bemidji State University - Hobson Memorial Union

June 17, 2025, 2 - 4 p.m.

Location: Paynesville Green Roof Area Center

June 18, 2025, 9:30 - 11:30 a.m.

Location: Marshall Merit Center

June 18, 2025, 2 - 4 p.m.

Location: Worthington Memorial Auditorium

June 24, 2025, 9:30 - 11:30 a.m.

Location: New Ulm Community Center

June 24, 2025, 2:30 - 4:30 p.m.

Location: Riverland Community College, Albert Lea

June 26, 2025, 9:30 - 11:30 a.m.

Location: Chatfield Center for the Arts

June 26, 2025, 2:30 - 4:30 p.m.

Location: Zumbrota VFW

For more information and to stay up-to-date, visit MPCA’s website at <https://www.pca.state.mn.us/get-engaged/animal-feedlots>.

The USDA Risk Management Agency helps protect your Pasture, Rangeland, and Forage (PRF) from the elements.

- Very affordable – Government subsidized
- No adjusters needed
- Rainfall monitored by NOAA
- Premiums are not due until October 1st
- No claim forms
- Protects your cash flow



CKP

SPECIALIZING IN PRF & LRP

PART OF THE BROWN & BROWN INSURANCE SERVICES, INC. TEAM

CONTACT YOUR CKP PRF SPECIALIST TODAY

Suzanne Menges (928) 961-0915

ckpinsurance.com

2025 SUMMER TOUR STOPS



Smude's Angus Farms, a Black Angus beef cattle operation near Pierz, Minnesota, is owned and operated by Tom Smude and his family. In 1998, Tom and Jenni Smude purchased the farm, and they've been raising Black Angus beef cattle ever since. They raise all their own feed, planting crops on 200-owned and 500-plus rented acres.

In 2005, the Smudes built a feedlot to finish their cattle for the market and have sold farm direct since. After two straight years of crop devastation and extensive research into drought-tolerant crops, they took a gamble and planted 60 acres of sunflowers in 2009.

In 2010, the Smudes built a small oil crush plant on the farm so they could press sunflower seeds into sunflower oil and "byproduct" sunflower meal. They sell their sunflower oil on the retail market as Smude's Sunflower Oil, and the sunflower meal is utilized as a high-quality source of protein and good fats for the cattle.

Never strangers to hard work and committed supporters of the local economy, the Smudes are proud to own and operate three other businesses in the Pierz community. The demand for high volumes of bulk sunflower oil grew into Midwest Processors. Midwest Sales & Construction sells livestock equipment, grain bins and other grain handling equipment. The Smudes also service most

grain bins and dryers, as well as constructing grain bins and hoop buildings. Rich Prairie Custom Woods offers quality woodworking solutions, such as CNC machining and custom molding, for a wide variety of customers and industries.



Kathrein Charolais, a family-owned operation run by Clint and Roxane Kathrein, is a 150-head cattle farm nestled northwest of Little Falls, Minnesota. Specializing in registered Charolais and Red Stabilizer cattle, the Kathreins also manage around 70 acres of chopped corn and raise hay. While they own approximately 80 acres, all of their pastureland is rented.

Clint's roots in agriculture run deep. After graduating high school in 1992, he purchased the current farm in 1993 through a Farm Service Agency (FSA) young farmer program. The property had previously been foreclosed and was acquired as part of a beginning farmer initiative.

Just a mile away, Clint was raised on a beef and hog farm, and he spent his youth showing cattle and doing professional fitting work at shows across the country. Although he valued those experiences, Clint soon realized showing cattle alone wouldn't sustain a business. He began shifting focus, paying closer attention to genetics and traits that matter in the beef industry.

In 2012, Kathrein Charolais became a cooperator herd with Leachman Cattle of Colorado, a partnership that has significantly impacted the operation. Through Leachman's breeding, selection and marketing support, the Kathreins have embraced data-driven decisions, including DNA testing and feed efficiency evaluations.

In a region where spring calving is the norm, the Kathreins stand out by calving in November and December. Every cow is artificially inseminated or receives an embryo transfer. Afterward, cows are turned out to pasture without calves or bulls, streamlining the breeding and calving process.

The farm underwent a significant transformation from 2016-2020. The Kathreins invested in major infrastructure upgrades: replacing high-tensile wire fencing with steel continuous panels and pouring 1,200 yards of concrete to create a manure stacking slab, calving shed and new feed bunks. Their daughters, Kaylee and Kendra, were instrumental during the renovation. Today, Kaylee is married to Derek Pratt, and they have two sons, Arthur and Leland. Kendra and her husband Jacob Thoma have two daughters, Aurora and Ellie. Both daughters are active on their own family farms today.

Clint blends an old-school philosophy of handshake deals and neighborly cooperation with a modern mindset embracing new technologies and data analytics. It's this combination that sets Kathrein Charolais apart.

Clint is eager to share his operation with a broader audience, especially those unfamiliar with modern farming.

"The biggest thing for me is getting folks to the tour to educate them on farming and the new technology being used by farmers," Clint says. "I'm not only excited to highlight my farm, but I'm excited to showcase this area – every stop has something that will surprise people."

The X Factor

The performance benefits of **The X Factor** re-implanting without the hassle.

Two doses of high-performance growth. One simple labor-saving application.

That's the power of X – REVALOR® -XS and -XH (trenbolone acetate and estradiol extended-release implants).



Stay ahead of new guidelines with the implant that delivers two doses in a single application.

REVALOR-XH IMPORTANT SAFETY INFORMATION:
Not approved for repeated implantation (re-implantation) with this or any other cattle ear implant in growing beef heifers fed in confinement for slaughter. Safety and effectiveness following re-implantation have not been evaluated. Do not use in beef calves less than 2 months of age, dairy calves, and veal calves. A withdrawal period has not been established for this product in pre-ruminating calves. Do not use in dairy cows or in animals intended for subsequent breeding. Use in these cattle may cause drug residues in milk and/or in calves born to these cows. Implant pellets subcutaneously in ear only. Any other location is a violation of Federal law. Do not attempt salvage of implanted site for human or animal food. Not for use in humans. Keep out of reach of children. For complete safety information, refer to the product label.

REVALOR-XS IMPORTANT SAFETY INFORMATION:
Do not use in beef calves less than 2 months of age, dairy calves, and veal calves. A withdrawal period has not been established for this product in pre-ruminating calves. Do not use in dairy cows or in animals intended for subsequent breeding. Use in these cattle may cause drug residues in milk and/or in calves born to these cows. Implant pellets subcutaneously in ear only. Any other location is a violation of Federal law. Do not attempt salvage of implanted site for human or animal food. Not for use in humans. Keep out of reach of children. For complete safety information, refer to the product label.



Scan the QR code to learn more.



MAHCattle.com • 800-521-5767
©2023 Merck & Co., Inc., Rahway, NJ, USA and its affiliates. All rights reserved. US-RVL-230500003

2025 SUMMER TOUR STOPS



With deep family roots and a commitment to adaptability, **Zapzalka Farms LLC** stands as a testament to how Minnesota farms have evolved over generations. Located near Little Falls, the operation is owned and operated by brothers Tim and Terry Zapzalka, who took over the farm in 2001. The land has been in their family since their grandfather's time, later passing to their father, who ran a dairy farm.

In 1973, there was construction of a new dairy barn – an investment by their father that marked a time when dairy was still at the core of the farm. However, by the time the brothers took over in 2001, the dairy cows had been sold, and the operation was in need of a new direction. They began by raising springer heifers, transitioning to dairy steers, which has since become their primary livestock focus.

Today, Zapzalka Farms raises over 200 head of dairy steers, while also managing a diverse cropping system that includes corn, soybeans, grass hay and small grains like winter rye. This transition from a dairy operation to a beef and grain enterprise reflects not just changes in the market, but in technology and farm management.

Technology has played a crucial role in the farm's evolution. Modern tractors, feeding systems and crop management tools have allowed them to become more efficient, all while reducing labor and improving precision in their practices.

Despite these advances, the brothers continue to rely on each other's strengths to keep the farm running. Tim worked off the farm for many years before returning full time a few years ago. Terry, who works for the USDA Natural Resources Conservation Service (NRCS) in Morrison County, brings a conservation-focused mindset to the farm, helping integrate sustainable practices that benefit both livestock and land.

As a tour stop this year, Zapzalka Farms LLC offers visitors a unique look at a farm that has gracefully navigated significant changes. This operation reflects the story of many central Minnesota farms adapting to the future while honoring the past.

Tim and Terry are excited for farmers in the area to tour Zapzalka Farms LLC and hopefully learn something new.



Located in the heart of central Minnesota, **Barrett Petfood** develops super premium pet food diets from emerging brands to market leaders in the industry. The family-owned, nimble execution and continuous innovation takes pet food manufacturing, packaging and distribution to differentiating levels.

In 2006, Barrett Petfood was introduced to the pet food industry when a piece of equipment was purchased by Mike Barrett, an agricultural entrepreneur, with anticipation to manufacture ag-

ricultural products. The Barretts realized that the piece of equipment was truly designed for food manufacturing.

Seeing the opportunity, Mike and his children (Tom and Sarah), strategically decided to pivot into the pet food industry. Mike soon transitioned ownership and leadership of the company to Tom and Sarah, while he, still to this day, focuses on the farming aspect of the business, growing ingredients for Barrett as a local supplier.

With Tom and Sarah leading the company, the business continues to grow at an exponential rate. While the decision to enter the pet food industry was well-timed for the Barretts, the growth had more to do with how the two siblings decided to position the company in the industry.

Tom and Sarah decided to focus on their strengths. Tom took over the business development and key supply chain activities, while Sarah played to her unique capability in understanding how to operationalize numerous pieces of equipment and people to ensure quality and product expectations were met for their customers.

They use a "Don't Say No" philosophy that allowed Barrett and their growing partners to push the limits of what a super-premium pet food could be. This innovation mindset, coupled with a relationship-based business approach, quickly made the two of them emerging and now respected leaders in the pet food industry.

While continuing to focus on partner brand growth, the Barretts saw their next opportunity to expand their operations. In 2020, Barrett opened a second manufacturing facility in Little Falls, Minnesota, adding 160,000 square feet and two additional production lines to their operations.

Today, Barrett Petfood produces hundreds of formulas that feed dogs, cats, reptiles, birds, livestock and zoo animals around the world. Sourced locally and shipped globally, Barrett Petfood produces and delivers some of the top super premium pet food diets in the industry.



Kaiser Farms, located near Little Falls, Minnesota, is a proud multi-generation cattle, crop and trucking operation owned and operated by Chris and Ashley Kaiser, alongside Chris's parents, Donald and Janet.

The story of Kaiser Farms began in the early 1950s when Chris's grandfather Jerome (Harry) Kaiser and grandmother Rosemary Kaiser purchased the original land and started a cow/calf operation. By the early 1960s, Harry expanded into trucking – a business that quickly became an essential part of the farm's identity. After Harry's passing in the late 1980s, the operation passed to his sons, including Chris's father, Donald, who continued to grow both the farm and trucking business.

Through the years, the Kaisers maintained their cow/calf herd, raising and finishing calves while

gradually increasing their numbers and expanding their capacity. In 2017, Chris and Ashley bought out Chris's uncle's share of the farm and trucking company, officially becoming partners with Chris's parents. At that time, they were feeding around 200 head and managing 80 cow/calf pairs.

Family is a key element to the operation – Chris and Ashley have a daughter Maleah (11) and son Harrison (9) who both help out on the farm.

Last summer marked a major step forward for the Kaisers with the construction of a 400-head deep pit barn, which was completed in January. Today, Kaiser Farms feeds 350 to 400 head, maintains the cow/calf side of the operation and runs four trucks that support their diversified operation. In addition to livestock, the Kaisers raise their own feed – about 325 acres of corn and over 100 acres of hay.

"I'm excited to promote beef as a tour stop," says Chris. "There are a lot of good operations in our area that I think people will enjoy."



Caughey Cattle Co is a family-owned beef operation run by Mac and Stacey Caughey in central Minnesota. Mac grew up on the farm as the third generation, and Stacey grew up on a small hobby farm nearby. Stacey and Mac took over the beef operation in 2021 after the farm split, thus creating Caughey Cattle Co.

They manage nearly 700 acres of crops, primarily small grains and corn, with most of the corn used to feed their cattle. Without access to hay ground, they creatively rely on straw and small grains to support their herd.

The Caugheys raise about 160 head of Red Angus Simmental cross cows, calving in January. They also operate an open lot feedlot, finishing around 300-400 head annually. The Caugheys are able to interact with consumers by selling beef direct to locals.

A big part of the operation is being flexible and using resources to the best of their ability. They feed cattle on crop residue in the wintertime.

Mac has worked at BNSF Railway in Brainerd as a machinist for 20 years. Stacey is currently studying to become a nurse to better care for their youngest daughter, Kaylor (2), who has health challenges. Their sons, Rhett (7) and Cash (6), enjoy pitching in around the farm.

The Caugheys have been focused on rebuilding – adding infrastructure like a shop, silage pit and grain bins.

"Our farm is relatable to most in Minnesota," says Stacey. "We hope that by sharing what works for us, other farmers might find ideas they can use in their own operations."





**ADVERTISE
WITH US!**

MINNESOTA STATE CATTLEMEN'S ASSOCIATION
CONTACT: kaitlyn@mnsca.org

Debbie Chute Named 2025-2026 Vice President of American National CattleWomen

DENVER, CO — The American National CattleWomen (ANCW) is proud to announce Debbie Chute of Aitkin, Minnesota, as its newly elected Vice President for the 2025-2026 term. A respected leader in Minnesota's agricul-

tural community and a passionate advocate for beef producers, Chute brings decades of experience, grassroots engagement and a deep commitment to rural America to her national leadership role.

Chute and her husband, John,

own and operate a commercial Red Angus cow/calf operation in north central Minnesota, where they raise pasture-to-plate beef sold directly to a loyal customer base—some of whom have been purchasing their products for over 30 years. The Chutes are now in their 44th year of direct marketing farm-fresh beef, providing high-quality meat from their 60-head cow herd.

In addition to her work on the ranch, Debbie has a full-time career with her local rural electric cooperative and remains actively involved in local and statewide agricultural organizations. She recently completed a four-year term as ANCW Region III Director and is a graduate of the prestigious Minnesota Agriculture and Rural Leadership Program (MARL). Her leadership has extended to serving on MARL's Alumni Committee and organizing two alumni trips.

Debbie's dedication to the cattle industry is evident in her longstanding service with the Minnesota CattleWomen, where she has held nearly every leadership position, including President. She is also actively involved with the Aitkin County Farm Bureau and the Minnesota Farm Bureau's Political Action Committee, advocating for rural and agricultural policy.

"Debbie's tireless work ethic, love for her community, and devotion to agriculture make her a powerful voice for our members," says ANCW President Nikki Weston. "Her experience in both cattle production and cooperative leadership will bring a grounded and practical perspective to ANCW."

"It's an honor to serve this incredible organization of women who care deeply about our land, livestock and legacy," says Chute. "I look forward to listening, learning and leading alongside our members across the country."

To learn more about the American National CattleWomen and its leadership team, visit www.ancw.org.



TRUST IN BEEF™

SUSTAINABLE RANCHERS

TOUR

July 24th, 2025
7:30 a.m. - 4:00 p.m.
(Evening reception on July 23rd 5:00 p.m. - 7:00 p.m.)

Learn how ranchers like
you are finding success in
their operations.



Clear Springs Cattle Company
Jim Wulf Family
30819 250th Street
Starbuck, MN



Learn More and
Register for this free
event today!

**AMERICA'S CONSERVATION
AG MOVEMENT**

**TRUST
IN BEEF™**

TRUST IN
FOOD
A FARM JOURNAL INITIATIVE

USDA Natural Resources Conservation Service
U.S. DEPARTMENT OF AGRICULTURE

FARM JOURNAL
FOUNDATION

ABS

COUNTRY
NATURAL
BEEF

DROVERS

DUCKS
UNLIMITED

EARTHOPTICS

American Farmland Trust

AEM

DUCKS
UNLIMITED

National Association of
Conservation Stewards

MERCK
Animal Health

Nat GLC
NATURAL GROWTH
AND LIVELIHOODS

NCBA
National Cattlemen's
Beef Association

POWERFLEX
INDUSTRIAL BEARING SUPPLY

NATIONAL
FARMERS
UNION

POK
CHECKOFF

Enogen
syngenta

PORK
CHECKOFF

VALENT

Protein
PACT

Enogen
syngenta

TRUST IN
FOOD
A FARM JOURNAL INITIATIVE

Tyson

AMERICAN
CATTLEWOMEN




ENVIRONMENTAL SERVICES

At Centra Sota, we've been helping farmers for a century. We are proud to partner with you on Environmental Government Assistance Programs, Irrigation Water Management, Nutrient Management, Conservation Agronomy, & more.



Cost Share Opportunities

We help producers navigate the opportunities available in the conservation world - including NRCS programs, SWCD and MDA state cost-share opportunities, and ecosystem markets (carbon, etc.).



Nutrient Management

The right nutrient management plan can help you use your available resources to their fullest potential. Having detailed field data can help you make the right decisions for your farm.



Conservation Agronomy

We'll work with you to achieve your on-farm and business sustainability goals while improving your soil health, water quality and achieving your goals for profitability.



Pollution Control Permitting

We specialize in getting the plan, paperwork, and permits so you can focus on your operational success. We specialize in feedlot MPCA permits from federal, state, and county level including biosolids, and industrial by-product.



centrasota.com

[612-400-3974](tel:612-400-3974)

conservation@centrasota.com



YOUR TOOL FOR CONFIDENT DECISIONS

Pro Ag Power is a risk management tool that gives producers like you instant access to trade standings, real-time market data, insights and more – anytime, anywhere.

GET SET UP TODAY ➔ **Call 507-449-2030**



Risk Management | Insurance | Consulting

ProfessionalAgMarketing.com

COMPETITIVE RATES TRANSPARENT TRUSTED IN THE ELEMENTS



HONORED TO SERVE THE CATTLE INDUSTRY SINCE 1994
CONTACT US! 507.648.3721

DRY CREEK TRUCKING INC.
Lamberton, MN



WIESER CONCRETE

&



FARM CREDIT
ILLINOIS

Helping Farm Families Succeed

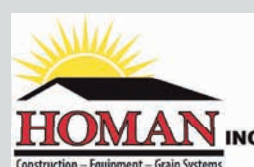
Would like to cordially invite you:
KITLEY CATTLE COMPANY - FINISHING FACILITY
OPEN BARN EVENT!!!

July 9, 2025
10:30am - 3:00pm

Troy & Amy Kitley
13890 Old Hwy 50
Clay City, IL 62839

Co-Sponsors:

DAIRYPOWER
EQUIPMENT
SLURRY MANAGEMENT SYSTEMS



Farm Credit Illinois will be providing lunch and refreshments!

Come by and check out the barn, talk with the Kitley's about their process, planning and execution of their new finishing barn.
Don't forget to stop by the sponsor booths to learn how they can support your future goals!






FEEDING QUALITY
 FORUM

ROCHESTER, MINNESOTA
AUGUST 14-15, 2025

REGISTER AT:
FeedingQualityForum.com

Discover practical solutions and useful insights to lead your operation with profitability top of mind.

Early Registration: \$125
(JUNE 1 TO JUNE 30)

Regular Registration: \$250
(JULY 1 TO JULY 31)

Student Registration: \$50
(JUNE 1 TO JULY 31)

DROVERS
Bringing the Best to the West

THANK YOU TO OUR SPONSORS

FEED LOT



Rabo
AgriFinance



ANGUS LINK
VALUE ADDED PROGRAMS



Diamond V
The Trusted Experts In Nutrition & Health



Selko

Alltech

HYDRO-LAC®



CATTLE'S BEST DEFENSE FOR STRESS. HYDRATION & ENERGY SUPPORT.

Hydro-Lac is the first choice to provide cattle specific electrolytes, multiple energy sources, and essential vitamins and nutrients to help cattle cope with heat stress challenges.



Hydro-Lac can help improve cattle performance during periods of stress:

- Encourage water intake
- Improve dry matter intake
- Replenish electrolyte balance
- Re-establish positive energy balance
- Improve carcass quality
- Reduce shrink loss
- Preserve performance
- Support rumen function

Contact your local Form-A-Feed representative to add Hydro-Lac to your heat abatement program today!

FormAFeed

800.422.3649 • www.formafeed.com



Designed for Feeding Performance

AMERICAN MADE Feed Mixers



Available in
Truck, Trailer
or Stationary

920 Horizontal Mixer
Mixing capacity of 920 cu. ft.
Choice of Rotor styles

Roto-Mix designs and manufactures
over 50 different models of feed mixers
here in the U.S.A.

We offer vertical and horizontal mixers
from 270 to 1300 cubic foot capacities for
any size of Dairy or Beef operation.

Steve Gehrke
Midwest Regional Manager
Ph: (608) 778-3878

525 Vertical Mixer
Twin augers with
520 cu. ft. mixing
capacity.



www.rotomix.com
RMV-920-525

620.225.1142



ADVERTISE WITH US!



CONTACT: kaitlyn@mnsca.org

Register Today



MSCA Summer Tour

July 15, 2025

Little Falls, MN



<https://www.mnsca.org/summer-tour>



Sign Up a New Member Today - Help MSCA Grow!
Minnesota State Cattlemen's Association/National Cattlemen's Beef Association
MSCA/NCBA Partnered Membership Application Form

Name _____ Phone _____ Email _____

☐ YES I would like to receive the Policy Pen E-Bulletin

Address _____

City _____ State _____ Zip _____

Type Ops: ☐ Feeder ☐ Cow-Calf ☐ Seedstock ☐ Stocker ☐ Dairy ☐ Associate

Method of Payment: ☐ Check ☐ Credit Card ☐ Invoice Me

Credit Card Type: ☐ Master Card ☐ Visa ☐ Discover

Card # _____

Expiration Date ____/____/____ Signature _____

Make Checks Payable to: "MSCA" (No Cash Please)
Return Form & Payment To: MSCA Treasurer

PO Box 12, Maple Plain, MN 55359

Recruited By: _____

Questions Call: (763) 479-1011 or email: mnsca@mnsca.org

MN State Cattlemen's Association Dues\$100

Junior Dues\$25

Local Cattleman Association Dues (Optional)

Contact your local association to join

NCBA Membership Dues (Optional)

(Select the appropriate classification and add to MN State Cattlemen dues)

1-100 - \$170

101-250 - \$340

251-500 - \$510

501-750 - \$736

751-1000 - \$1,020

1001-1250 - \$1,304

1251 - 1500- \$1,586

1501 - 1750 - \$1,870

1751 - 2000 - \$2,154

Stocker/feeder - \$170 + (\$0.4307/hd) =

Associate Dues

Individual - \$170

Business - \$226

Student (24 or younger) - \$56

(NCBA Dues →)

Total Dues Enclosed This Membership