



The Minnesota Cattlemans

The Official Newspaper of the Minnesota State Cattlemen's Association®

What's Inside

MBC Update	4
News Briefs	8-9
2025 Summer Tour Photos	11
Farmfest	13

Volume 28 | Edition 4 | August 2025

2025 MSCA Summer Tour Brings Together Cattlemen, Community and Industry

The 2025 Minnesota State Cattlemen's Association (MSCA) Summer Tour was held on July 15 in Little Falls, Minnesota, proudly hosted by the Mississippi Valley Cattlemen's Association, one of 21 local MSCA affiliates. The day-long event brought together cattle producers, ag industry professionals and community members for a full day of agricultural insight, networking and hands-on learning.

The Mississippi Valley Cattlemen's Association showcased

farms and businesses across the region, giving attendees an inside look at central Minnesota's diverse cattle and agricultural operations.

"The tour was a big success," says Darv Keehr, Mississippi Valley Cattlemen president. "We received many compliments, and we had the best volunteers."

Tour headquarters were based at the Morrison County Fairgrounds, serving as the launch point for visits to several stand-out farms and agribusinesses, including:

- Barrett Petfood
- Kathrein Farms
- Smude's Angus Farms
- Kaiser Farms
- Caughey Cattle Co.
- Zapzalka Farms

Attendees also enjoyed opportunities to connect with fellow cattlemen, meet industry vendors and share ideas to strengthen Minnesota's beef community.

If your local cattlemen's group is interested in hosting the 2026 MSCA Summer Tour, contact Kaitlyn by calling 763-479-1011.



Harrison Kaiser, Chris and Ashley Kaiser's son, pictured at Kaiser Farms, one of six 2025 Summer Tour stops.

MSCA

MSCA is a grassroots organization consisting of over 20 local cattlemen's groups, providing the greatest opportunity for producer input and policy recommendations

Minnesota State Cattlemen's members, did you know you can pay your local affiliate dues online? Use the link below to renew your membership for the state and local association!

<https://www.mnsca.org/become-a-member/membership-application>



Summer Tour attendees walk through the new deep pit slat barn at Kaiser Farms.



Clint Kathrein presents to attendees at his operation. Photo courtesy of Jason Steussy

PRESORTED STD
 US POSTAGE
PAID
 Detroit, Lakes, MN
 Permit No. 14

NEWS - TIME SENSITIVE MATERIAL



Summer Tour attendees pictured at Smude's Angus Farms. Photo courtesy of Jason Steussy

MORE SUMMER TOUR PHOTOS ... on page 11



KAITLYN ROOT
Executive Director
Office: 763-479-1011

Hello, Minnesota State Cattlemen's Association members!

I hope summer is going well for you. It seems each summer just goes by faster each year! Many of us can probably agree that this is due to overloading our schedules and trying to do

100 outdoor projects in one week. Let's not forget to enjoy the long days, sunsets, fresh fruits and vegetables, the smell of fresh cut grass and all of the other joys that summer brings our way!

We just wrapped up Farmfest last week as I write this, and I am feeling extremely grateful for the time that volunteers take out of their day to assist this organization. We can't accomplish much alone – and it is pretty neat to see what we can accomplish with helping hands.

Whether it's serving beef sandwiches or simply offering a friendly greeting to attendees, every role matters. The success of events like Farmfest isn't just measured by the number of people who stop

by our booth, it's measured in the teamwork, dedication and pride that our volunteers bring.

Volunteering is at the heart of the MSCA. It's what allows us to advocate for our industry, share our story with consumers and build relationships with policymakers, all while keeping the best interests of our members in mind. Your willingness to pitch in, whether it's for a few hours or an entire day, ensures we can continue working for cattle producers in Minnesota.

I know time is one of the most valuable things we have, especially during a Minnesota summer. That's why I'm especially thankful to those who choose to spend some of it supporting MSCA. Your efforts don't go unnoticed, and they

make a real difference not only for the organization, but for the cattle industry as a whole.

As we head into the busy fall season, I encourage you to look for opportunities to get involved – big or small. Lend a hand at an upcoming event, share your expertise on a committee or simply encourage others to join us. Volunteering isn't just about helping with the task at hand; it's about building a stronger, more connected community of cattlemen and women across Minnesota.

From the bottom of my heart, thank you to all who have given their time, energy and skills this summer. You're proof that when we work together, we can accomplish more than we ever could alone.



JAKE THOMPSON
President

Hello, fellow cattlemen and cattlemen,

I can't believe we are into August already. We are combining small grains and ultra sounding cows. Soon, fall harvest will be upon us.

The MSCA made a powerful impact this summer through its signature Summer Tour and ac-

tive involvement in Farmfest, reinforcing its leadership in advancing the state's beef industry and agricultural policy.

Hosted by the Mississippi Valley Cattlemen's Association on July 15, the Summer Tour drew over 600 producers, industry partners and legislators. The tour spotlighted six innovative operations:

- Barrett Petfood Innovations: Showcased the intersection of pet nutrition and livestock production.
- Kathrein Farms: Demonstrated genetic excellence in Charolais and Red Stabilizer cattle.
- Smude's Angus Farms: Highlighted vertical integration and direct-to-market beef and sunflower oil.
- Kaiser Farms: Shared insights on infrastructure up-

grades with its new deep pit slat barn.

- Caughey Cattle Co.: Focused on consumer-facing beef sales and finishing strategies.
- Zapzalka Farms: Emphasized feed self-sufficiency and adaptive reuse of dairy facilities.

The event also featured a Political Action Committee fundraiser and corn hole tournament, reinforcing MSCA's commitment to advocacy and grassroots engagement.

At Farmfest (Aug. 5–7), MSCA played a key role in shaping conversations around livestock policy, sustainability and rural development. Highlights included:

- Beef Advocacy: Members engaged with consumers and legislators to promote beef's role in nutrition and

sustainability.

- Networking & Outreach: The MSCA booth served as a hub for producers to connect, share resources and celebrate Minnesota's cattle heritage.

A huge thank you goes out to all the volunteers that help at Farmfest. This is our largest fundraiser of the year and could not be accomplished without all the help. A special thank you to the Farmfest committee that has made everything run smoothly for the last 15 years.

Together, these events showcased MSCA's dedication to innovation, education and advocacy – ensuring Minnesota's cattle industry remains strong, resilient and future-focused. A great reason to encourage non-members to join.

Until next time, may your fences stay strong.



RACHEL GRAY
President-Elect

Hello, from northern Minnesota!

I hope that your summer has been going well. In the

north country, we have been busy trying to get some hay dry and keeping the cattle moving through our pasture system.

In our area, it seems as though it is raining a small amount every couple of days, and on the days that it has not rained, we have been blanketed with smoke from wildfires.

Most producers here are seeing a nice crop of hay, but they have been wrapping it since drying hay has been tough. We have completed the second crop and

are looking forward to a possible third crop. We're letting some fields grow to stockpile for late fall grazing.

The small grain harvest is just starting here, with a few farmers getting ready to combine oats, barley and wheat. It keeps us all busy!

I hope you had a chance to attend the Summer Tour. What an amazing turnout with so much to see and do. I am already looking forward to our annual convention and next year's tour.

As I look ahead to September, we will be getting ready

to ship bred heifers to their new ranches, and at the same time, getting ready for new calves to come in. What a wild time to be in the cattle business!

I am also looking forward to participating in the NCBA Region III Fly-In held in Washington D.C. in September. We will meet and discuss policies affecting the cattle industry and get a chance to visit with the senators and representatives from Minnesota about what our industry needs.

Have a wonderful fall.

Minnesota State Cattlemen's Association
PO Box 12
Maple Plain, MN 55359
763-479-1011
www.mnsca.org
mnsca@mnsca.org

Executive Committee

- President - Jake Thompson**
Barnesville, MN 56514
(218) 329-9293, fourhillfarms2@yahoo.com
- President-Elect - Rachel Gray**
Blackduck, MN 56630
(218) 766-4929, ltimber1616@gmail.com
- Vice President - Eric Zeltwanger**
Morris, MN 56267
(320) 766-0066, ericzattle@gmail.com
- Past President - Grant Breitkreutz**
Redwood Falls, MN 56283
(507) 430-0607, gdbreitkreutz@hotmail.com
- Cow-Calf Council Chair - Dustin Wiese**
Pequot Lakes, MN 56472
(218) 537-0096, dustinwiesefwr@gmail.com
- Feeder Council Chair - Dallas Knobloch**
Hills, MN 56138
(507) 227-1304, daknob@alliancecom.net
- Legislative Chair - Krist Wollum**
Porter, MN 56280
(507) 530-3854, kkwollum@yahoo.com
- Membership / Industry Relations Chair - Angie Ford**
Stayton, MN 56172
(507) 360-7937, mnsccmembership@gmail.com
- Secretary/Treasurer - Kevin Hoge**
Aitkin, MN, 56431
(218) 549-3337, flatrock@frontiernet.net
- Business Director & Accounting - Heather DeLong**
Maple Plain, (763) 479-1011
- Executive Director - Kaitlyn Root**
Maple Plain, kaitlyn@mnsca.org
Office: 763-479-1011

MSCA Regional Directors

- Region - 1 James Widner**
Strandquist, MN 56758
(218)-991-2210, james.widner@hotmail.com
- Region - 2 & 3 Eric Nolte**
Sebeka, MN 56477
(218) 539-0124, hiddenangus@gmail.com
- Region - 4 Mark Schoenfeld**
Dawson, MN 56232
(612) 325-4001, circlesc@hotmail.com
- Region - 5 Darv Keehr**
Little Falls, MN 56345
(320) 630-6337, dkeehr@brainerd.net
- Region - 6 Ryan Anderson**
Aitkin, MN 56431
(320) 364-0355, royalempireangus@gmail.com
- Region - 7 Ryan Vos**
Hadley, MN 56151
(507) 227-2188, ryanvosfarms@gmail.com
- Region - 8 Ruth Hoefs**
Le Center, MN 56057
612-756-1500, rashoefs@gmail.com
- Region - 9 Chris Miller**
Mabel, MN 55954
(507) 458-7776, viewlawn1@gmail.com

Minnesota Cattleman

THE MINNESOTA CATTLEMAN® newspaper is the official publication of the Minnesota State Cattlemen's Association. "THE MINNESOTA CATTLEMAN®" is published on a contract basis 6 times per year and is provided to all MSCA members. Minnesota Cattleman Publications reserve the right to decline paid advertising that is not consistent with the goals and objectives of the Minnesota State Cattlemen's Association.

For Advertising Contact:
Kaitlyn Root, kaitlyn@mnsca.org,
763-479-1011

Post Master Send Address Corrections to:
Minnesota Cattleman Publications
PO Box 12 • Maple Plain, MN 55359



ROSEMARY GUSTAFSON

As summer winds down and we prepare for fall activities, I want to thank everyone who joined us for our August 7 webinar on cattle marketing, presented by Mitch Barthel and Dr. Eric Mousel. Their insight and expertise were invaluable, and we appreciate the time they dedicated to helping our members make informed marketing decisions.

For those who couldn't join us live, a full transcript is available to members on our website – a great resource to

revisit key points or catch up on what you missed.

Our next webinar will be held Wednesday, Nov. 13 at 7 p.m.:

“Navigating Unexpected Loss on the Farm” with Dr. Krishona Martinson.

This session will share the real-life story of how a farm family navigated the sudden loss of a young husband and father while also providing concrete steps you can take now to prepare your own family and operation for the unexpected. From legal and financial considerations to communication and record-keeping, the goal is to help ensure that if a tragedy occurs, you can keep the farm running and avoid devastating setbacks.

This webinar is open to all, and we encourage you to join us for an evening of valuable, practical information that can make all the difference in a crisis.

Thank you, 2025 Beef Alliance Members

THANK YOU to the following businesses that have committed to support members of the Minnesota State Cattlemen’s Association as a part of the Minnesota Beef Alliance Program for 2025. If you are interested in learning more about the Beef Alliance program, contact Angie Ford at mnscamembership@gmail.com.

Prime

- American Foods Group*
- Carlson Wholesale
- Merck Animal Health*
- Minnesota Beef Council
- Roto-Mix
- Form-A-Feed
- Producers Livestock Marketing Association
- AgCountry Farm Credit Services
- Boehringer Ingelheim

Choice

- Minnesota Corn Growers Association
- Zoetis

Select

- ADM
- Kent Nutrition Group
- Centra Sota Cooperative
- Artex Manufacturing
- Minnesota Farm Bureau
- Professional Ag Marketing
- Purina Animal Nutrition
- Northwest Lighting Systems
- Dry Creek Ranch Trucking, Inc.

Presidential

- CKP Insurance
- Wieser Concrete Products



* Indicates giving above base level for that category!

Our Beef Ambassador Team has also had a busy summer! They recently attended leadership training at the Minnesota Farm Bureau main office and toured Von Hanson’s Meats, Minnesota Leatherworks, and Rancher’s Legacy. A special thank you

to everyone who made this training possible.

In addition, the team has been actively advocating for beef through appearances at local fairs, Minnesota Farmfest, the MSCA Summer Tour and through radio and television interviews.

Looking ahead, they’ll be presenting on the Christensen Stage at the Minnesota State Fair on Saturday, Aug. 23 at 4 p.m. If you’re at the fairgrounds, be sure to stop by and cheer them on!



CHECK US OUT ON THE WEB AT www.mnsca.org



DALLAS KNOBLOCH
MSCA FEEDER CHAIR

Hello to all the cattlemen and women across the state! Summer is flying by at a rapid pace, and it’s time for the kids to head back to school and begin to prepare for harvest.

Summer weather has been great for the crops here in southwest Minnesota, and not so much for putting up hay and keeping the feedyards clean and dry. Thankfully, our rains have been timely and not in excessive amounts. Row crops look excellent in this part of the state, and

we will anxiously wait to see how they finish off.

It was great to see so many of you in Little Falls for the annual MSCA Summer Tour. Thanks to all of those that donated their time and efforts to make it all possible. Seeing the different operations, the many vendors and sharing ideas with others was a great way to bring home some valuable ideas to the operation.

Local and state cattlemen’s organizations have been busy grilling and serving beef throughout the summer. Town celebrations, golf outings, local fairs and other events are great ways to promote and serve great tasting beef. Thanks to all those that help to make this happen.

July was a busy month watching the comment deadline come and go for the 7020 feedlot rules. MSCA submitted comments along with other local cattle organizations to the Minnesota Pollution Control Agency. Thanks to every-

one that also commented individually.

This is the start of a three to five year process to reevaluate the current feedlot rules. MSCA will continue to watch this closely, keep you informed and work to provide fair and commonsense practices.

Cattle markets have completely been on fire. Record sales for fats and feeders continue to be the norm almost weekly.

As I write this, we are coming off a sharp Friday correction, so we will see where it goes. Short feeder supplies, abundant feed supplies, plenty of feedlot bunk space and high fat cattle are really rewarding the feeder cattle supplier. Consumer demand is the driving factor behind much of it, and until the consumer falters strong prices look to stay in place.

We hope each of you have a safe and bountiful fall harvest. Keep the feedlot pens full, the cows happy and plenty of BEEF on the grill!



ERIC ZELTWANGER
Vice President

Greetings fellow cattlemen,

Thank you, thank you, thank you, to everyone who helped at Farm Fest! It was a huge success again this year due to all those who give their time and talents to help make it so.

Also, a big shout out to American Foods Group for the donation of the meat for this great event! Special thanks to the Farmfest committee: Grant, Dawn, Krist, Dick and Mark, for giving all the time and energy it takes to make it happen. Without this event we would not have the organization we do today.

Last but not least, thank you to all the people who come out and enjoy a meal from us at the booth.

Now, what a time to be in the cattle industry! We are seeing record highs broke weekly, and everyone is wondering where it will stop.

I ask you why does it have to go down? I asked myself this very question about two

weeks ago as I trudged out into chest high water to lift yet another fence out of the water that comes with nine inches of rain in two days (the walk back was much easier as the mosquitos helped to carry me out).

Those of us doing the job need all the help we can from everyone who enjoys the products we produce. I encourage you to ask your neighbors and friends to join MSCA to keep our voice strong in the fight against everyone who wants to regulate or stop our way of life.

We as ag groups need to be united in this front, and MSCA is here to help do that.

As I finish writing this, we have wrapped up our county fair and will probably be at state fair before most people read this. I want to encourage everyone to stay positive about the weather. It is one of the things in this life that nobody can control (thankfully).

I also want to say thank you to those that encourage and help make the youth projects and shows across the state happen. Without giving our youth these opportunities, we would be looking at an even bigger shortage of help in the ag world.

Get them involved and give them a chance at a great career in ag – we are going to need all the help we can get!

As always, I hope your cows are fat and your calves are heavy!

Upcoming Events/Important Dates:

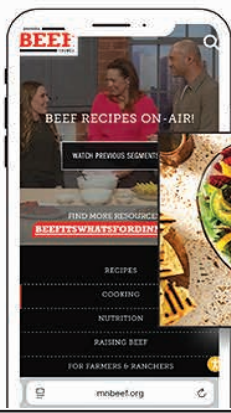
For more details on events listed below, visit www.mnsca.org.

September 4 – MSCA Quarterly Meeting – MN Beef Council Office, Maple Plain, MN – 11 a.m.- 3 p.m.

December 5-6 – Minnesota Cattle Industry Convention and Trade Show – River’s Edge Convention Center, St. Cloud, MN

Minnesota Beef Council

BEEF PROMOTION, EDUCATION, & RESEARCH



www.mnbeef.org

GrillFest



GrillFest, hosted by Minnesota Monthly, took place May 31-June 1 at CHS Field in Saint Paul. The Minnesota Beef Council participated in the event through a partnership with Blondies Butcher Shop, helping share beef's story with attendees through educational handouts and branded giveaways. A highlight of the weekend was the Burger Battle, where Lindsey from Blondies served up samples of a Hawaiian-



inspired burger. The flavorful creation was a crowd favorite, earning second place among tough competition. Hundreds attended the event, making it a great opportunity to share directly with consumers the great taste of grilled beef.

Passport to Ag

On July 31, Minnesota Beef Council (MBC) CEO Kelly Schmidt, and MBC Communications Director Ashley Wulf, represented the MBC at the Passport to Ag event held at the Rice County Fairgrounds. This event offered a valuable opportunity to connect with youth and share information about beef, alongside a variety of other agricultural com-

modities. The MBC booth featured an interactive spin wheel that quizzed kids on beef-related questions, with fun prizes and educational resources available for both children and adults. While this was MBC's first time participating, the event saw strong attendance with over 500 individuals – an increase from the previous year.

Twin Cities Live - 12 Days of Grilling

The Minnesota Beef Council makes a monthly appearance on Twin Cities Live, a TV show airing weekdays from 3-4 p.m. CST on KSTP, Channel 5-Eyewitness News, and is re-

broadcasted late in the evening. In addition to these monthly segments, the Minnesota Beef Council sponsored the 12 Days of Grilling in partnership with the Minnesota Pork Board from July 21-Aug. 5. This included TV segments of beef grilling recipes, alternating days with Pork. This promotion was a way to further capitalize on grilling season to showcase the versatility and taste of beef for the grill. Various individuals featured the recipes from chefs to meat markets and a beef producer (see below). You can find all of the replays on our Facebook page at Minnesota Beef.



- Latin Chef Amalia Moreno-Damgaard
- Phil Carlson from Von Hanson's Meat Market
- Chef John Van House
- Here's the Deal Spice Company
- LeeAnn Waugh from Cannon Valley Ranch
- Teena Anderson from Anoka Meat & Sausage

Back to the 50's Ladies Showcase



MSRA Back to the 50's is an annual car show held at the Minnesota State Fairgrounds, and as part of the event, a special "Ladies Showcase" takes place. This year, the Minnesota Beef Council was honored to be invited to present at the showcase on June 20 at the North End Event Center. We partnered with the University of Minnesota Meat Lab to deliver an engaging, educational session for attendees. Representing the Meat Lab, Ryan Cox and Jordan McCallum gave a presentation on the history of meat and demonstrated how to break down a beef carcass using a beef model. Following their presentation, Ashley Wulf from the Minnesota Beef Council shared insights into the Council's work, highlighting available resources and ongoing efforts to raise beef demand. Following the showcase, we continued conversations and connected with attendees at our tradeshow booth, where additional educational materials were available.



MBC TAILGATING RECIPE



EASY ROAST BEEF POTLUCK ROLLS

INGREDIENTS:

- 1 pound thinly sliced reduced-sodium deli roast beef
- 1 package (12 ounces) Hawaiian rolls
- 1/4 cup cream-style prepared horseradish
- 6 slices reduced-fat provolone cheese
- 1/3 cup butter, melted
- 2 tablespoons Worcestershire sauce
- 1 tablespoon dried parsley leaves
- 2 teaspoons packed light brown sugar
- 1/4 teaspoon onion powder

COOKING:

1. Coat 9 x 13-inch baking dish with cooking spray. Cut rolls in half, horizontally. Place bottom halves of rolls in prepared baking dish; spread horseradish on cut side. Top with Deli Roast Beef, cheese and top halves of rolls.

Cook's Tip: You may substitute Dijon mustard for prepared horseradish.

2. Combine butter, Worcestershire sauce, parsley, sugar and onion powder in small bowl; mix to combine. Pour mixture evenly over sandwiches. Cover and refrigerate 1 hour to overnight.

3. Preheat oven to 350°F. Bake, uncovered, 15 to 20 minutes or until cheese is melted and rolls are golden brown.

For more tasty beef recipes, visit us on the web at www.mnbeef.org.

MBC Board Meeting

The next Minnesota Beef Council Board of Directors Meeting is scheduled for Monday, November 17, 2025. The meeting will be held in Maple Plain, MN, at the Minnesota Beef Council office.

Minnesota Beef Council Events

August 21 – September 1, 2025 | Minnesota State Fair (Falcon Heights, MN)

August 25, 2025 | Twin Cities Live segment at the Minnesota State Fair (Falcon Heights, MN)

September 4, 2025 | Top of Class Applications due

October 14 – 16, 2025 | Partnership in Action Conference (Denver, CO)

October 22 & 23, 2025 | Top of the Class Session #1 (Maple Plain/Saint Paul, MN)

December 4 – 6, 2025 | Minnesota Cattle Industry Convention (Saint Cloud, MN)

Minnesota State Fair

The "Great Minnesota Get-Together" is fast-approaching! This year, the state fair runs from Aug. 21-Sept. 1. The Minnesota Beef Council will have a booth during the entirety of the 12 days of the fair, located in the Dairy Building by the butterheads. Be sure to stop on by to play a game, learn about beef and take home a prize. To volunteer at the booth, contact MBC Intern Ella DeFrang at intern@mnbeef.org. Volunteers will receive an admission ticket into the fair, a t-shirt and a free malt ticket.



DUSTIN WIESE
MSCA Cow/Calf Chair

The summer is flying by! We have had plenty of moisture, pastures look great and on top of that, calf prices are through the roof!

This time of year, it is fun to see those calves really pack on the pounds. But while we're watching those calves grow in the pasture, it is also the perfect time to think about how we can grow strong leaders for the future of Minnesota's beef industry.

The Minnesota Beef Council, in partnership with the MSCA, has opened applications for the 2025-2026 Top of the Class program. If you are looking to be more involved, this is an opportunity worth checking out.

The Top of the Class is a year-long development program designed to equip Minnesota beef producers with the tools, knowledge and confidence to step into leadership roles, whether that's on a local board, at the state association level or representing our industry on a national stage. Participants dive into everything from media train-

ing and beef nutrition to public speaking and consumer education.

This year, you will have the opportunity to join in three educational sessions, two of which are in state and one in Denver. Tuition costs \$300, which is only a fraction of the actual cost and includes lodging, some travel expenses and most meals during the program.

Past graduates of Top of the Class will tell you it's not just about building skills, it's about building relationships. You'll join a network of like-minded producers who care about the future of the beef industry as much as you do. You'll gain contacts who can offer advice, share ideas and maybe even become lifelong friends.

Applications for the Top of Class are due by Sept. 5. Applications may be found on the MN Beef Council website: www.mnbeef.org.

And as always, may your grass be plentiful, your calves be healthy and your voice be heard loud and clear in the future of our industry.



Energy Efficient Lighting Systems

- Barns
- Bin Sites
- Shops
- Yards & More!



Dru Larson • Tracy, MN • 507-530-1232
John Hannasch • Rice, MN • 612-616-7722
www.nwlightingsystems.com

Cartridges for Cash!

FOR EVERY EMPTY CARTRIDGE RECEIVED, MERCK ANIMAL HEALTH WILL GIVE \$0.25 TO MSCA!

GIVE THEM TO YOUR MERCK REP TODAY!

You name it...we can light it up!

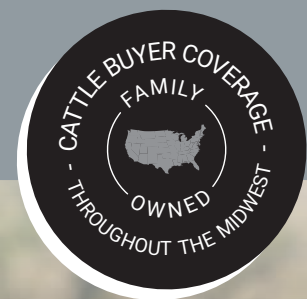


WHEN THE GOING GETS TOUGH
THE TOUGH
 DEPEND ON ARTEX

Family
FARMER OWNED
 proudly **MADE IN**

A DIVISION OF **Farmers Union Industries** **ARTEXMFG.COM | 888-644-2893** |

AMERICAN FOODS GROUP
 AmericanFoodsGroup.com



TOP PRICES PAID *for your cattle*

HOLSTEIN STEERS • BULLS • FED COWS • LEAN COWS • DAIRY CROSS FATS

American Foods Group
 KIMBALL, MN
TIM SCHIEFELBEIN
 320-398-2700
 Holstein Contracting
 Dairy Cross Fats

Long Prairie Packing
 LONG PRAIRIE, MN
TYREL LEMBKE
 651-256-6115
 Bulls • Lean Cows

AFG - Hutchinson Buying Station
 HUTCHINSON, MN
RICKY SCHIEFELBEIN
 320-304-2346
 Holstein Steers • Lean Cows
 Bulls • Fed Cows • Dairy Cross Fats

Green Bay Dressed Beef
 GREEN BAY, WI
DEAN DERRICKS
 920-436-6529
 Holstein Steers • Fed Cows
 Lean Cows • Dairy Cross Fats

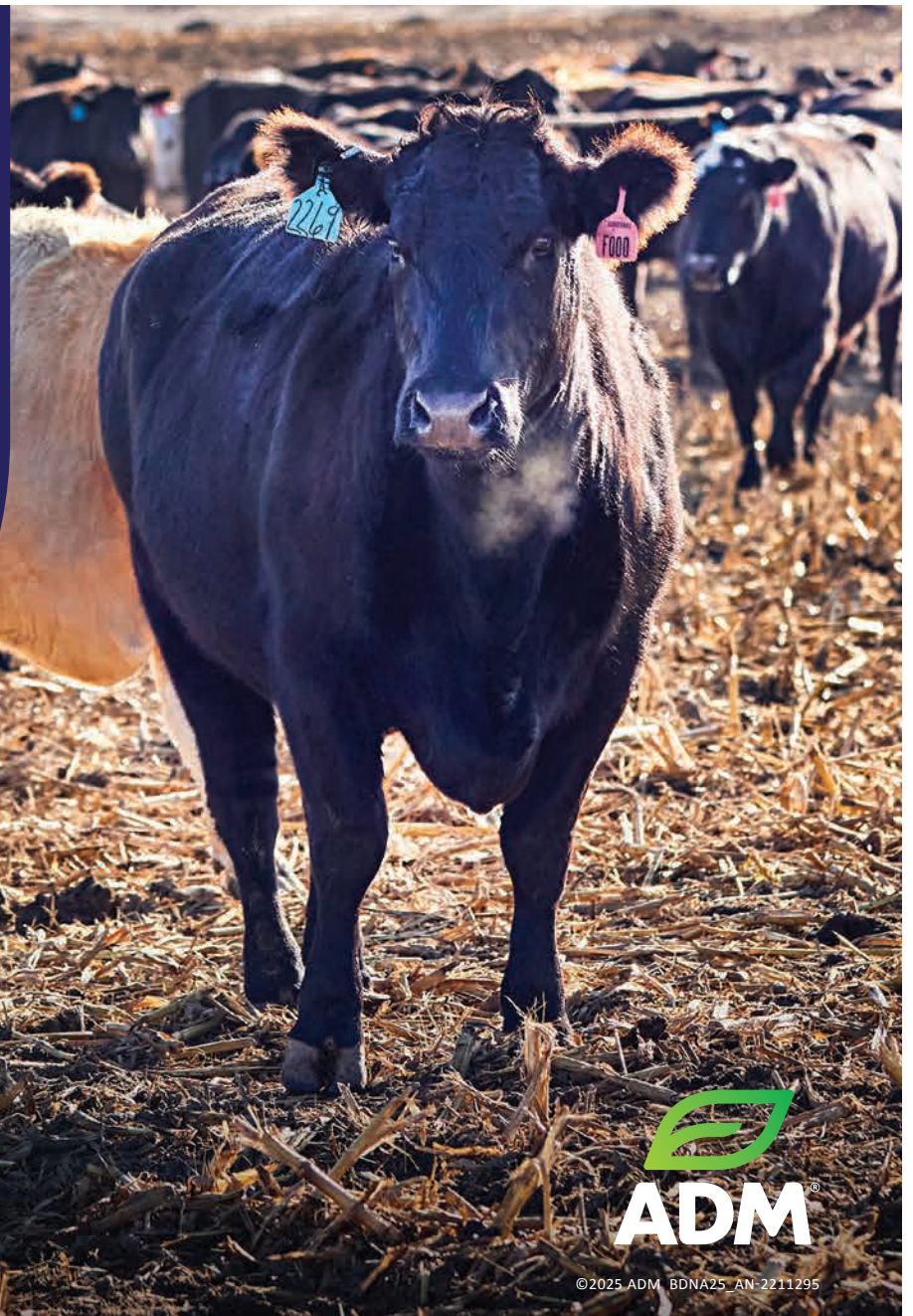
Long Prairie Buying Station
 LONG PRAIRIE, MN
BRANDON VAN HAVERMAET
 320-290-9220
 Holstein Steers • Lean Cows
 Bulls Fed Cows • Dairy Cross Fats

GLOBAL REACH, LOCAL EXPERTISE

A WORLD OF BULK LIVESTOCK FEED FROM ADM

ADM is your partner in quality bulk livestock feed, leveraging global and local expertise to deliver top products at competitive prices. Our extensive portfolio ensures you get the best for your livestock:

- Corn Protein Feed Pellets
- Wheat Middlings
- Golden Gluten™ WET FEED
- Modified Distillers Wet Grains with Solubles
- Wet Distillers Grain
- ADM Red Dog
- Liquid Gold™ HEAVY STEEPWATER
- Golden Distillers Dried Grains with Solubles



For further information on availability, pricing or any other requests, reach out to our team:

REGIONAL REPRESENTATIVE
Michelle Cornett
michelle.cornett@adm.com
+1 217-329-4480

CUSTOMER SERVICE
corncoorders@adm.com
+1 888-541-1062



© 2025 ADM BDN25 AN-2211295

PRODUCERS Livestock

Your profitability partner.

Marketing • Credit • Commodities

Producers Livestock offers livestock sourcing and marketing, commodities trading and hedging and loans and credit facilities to farmers and processors in the Midwestern U.S. and Central Plains.

Our team truly understands the problems you face when it comes to raising livestock, because we're livestock producers ourselves. But more importantly, we know how to find solutions that make your operation more profitable.

MARKETING
402-597-9189

CREDIT
402-597-9189

COMMODITIES
712-274-0539

Trusted partner for Midwest livestock producers for over 85 years.

NEWS BRIEFS

USDA Seeks Nominees for the Cattlemen's Beef Promotion and Research Board

The U.S. Department of Agriculture's (USDA) Agricultural Marketing Service (AMS) is seeking nominees for the Cattlemen's Beef Promotion and Research Board to

succeed 41 members with terms that expire in March 2026 and two vacant positions who represent the following states and units:

- Alabama, Arizona, Arkansas, Colorado, Florida, Georgia, Idaho, Illinois, Indiana, Iowa, Kansas, Kentucky, Minnesota, Missouri, Montana, Nebraska, New York, North Dakota, Ohio, Oklahoma, Oregon, Pennsylvania, South Dakota,

Tennessee, Texas, Virginia, and Wisconsin.

- Northwest Unit: Alaska, Hawaii, and Washington.
- Southwest Unit: California and Nevada.
- Importer Unit

The deadline for nominations is Sept. 12, 2025. Individuals appointed to the board will serve three-year terms beginning February 2026.

Beef producers within the United States who own cattle or any importers that import cattle or beef may be nominated. Producers and importers must be nominated by a certified producer organization and submit a completed application. The Secretary of Agriculture will select individuals from the nominations submitted.

The Cattleman's Beef Board is authorized by the Beef Promotion and Research Act of 1985 and is composed of 99 members representing 34 separate states, four units of geographically grouped states, and one importer unit.

A list of certified producer organizations, the nomination form and information about the Cattlemen's Beef Board are available on the AMS Cattlemen's Beef Board webpage and on the board's website, beefboard.org. For more information, contact Barbara Josselyn at (202) 713-6918 or Barbara.Josselyn@usda.gov.

Since 1966, Congress has authorized industry-funded research and promotion boards to provide a framework for agricultural industries to pool their resources and combine efforts to develop new markets, strengthen existing markets and conduct important research and promotion activities. AMS provides oversight of 22 boards. The oversight ensures fiscal accountability and program integrity and is paid for by industry assessments.

MDA Offers Grant for First-time Farm Buyers

Minnesota farmers' next chance for help buying their first farm has arrived, with the return of the Minnesota Department of Agriculture's (MDA) Down Payment Assistance Grant program.

The Down Payment Assistance Grant offers eligible farmers up to \$20,000 to help buy their first farm, up from \$15,000 in past years to reflect increasing land prices. The Minnesota Legislature boosted funding for the program to \$1.25 million this year, up from \$1 million last year.

Applications are open now through September 15, 2025, for the fourth round of funding. To date, the program has helped 112 farmers buy their first farms, with \$1,677,500 in total awards made.

Eligible applicants must make less than \$250,000 per year in gross agricultural sales, and they must match



Protect your inventory from vulnerabilities

RX3®

Your calf herd has never been more valuable than they are now. **RX3® Immune Support Technology** is designed to help prepare a calf's natural defense to optimize the response to stress and common calf health challenges, and ultimately to help ensure optimal performance for your bottom line potential.



FEED GREATNESS®



See what RX3 can do at purinamills.com/rx3

CHECK US OUT ON THE WEB AT www.mnsca.org

NEWS BRIEFS

the award with at least \$8,000 of other funds (e.g. loan, contract for deed, cash, or other financing) to unlock the full award amount.

The MDA will award grants using a random lottery process, with priority given to eligible applicants who:

- Have earned no more than \$100,000 in annual gross farm product sales, or;
- Are producers of industrial hemp, cannabis, or specialty crops.

The MDA will notify applicants of award decisions in late September.

Farm purchases from direct family (e.g. parents, grandparents, or siblings) are not allowed. Purchases from extended family (e.g. aunt/uncle, cousins) will be allowed.

Farm purchases must take place after approval of the application. The MDA cannot award grants for purchases that have already taken place.

Awardees have six months from the award notification to close on land purchases. The MDA will consider a deadline extension if the awardee can provide a signed purchase agreement or written commitment from an approved technical assistance provider stating that the applicant is looking for land and financially prepared to buy.

The MDA is hosting an informational webinar for prospective applicants. Additional webinar recordings and other resources focused on different topics related to the farm-buying process are also available on the MDA webpage.

MDA Opens Soil Health Financial Assistance Grant Applications

The application for the Soil Health Financial Assistance Program is open until August 29, 2025. Funding decisions will be announced by January 2026.

The Soil Health Financial Assistance Grant provides cost-share for the purchase and retrofit of soil

health equipment. Adopting soil health practices often requires expensive and specific pieces of equipment, creating a need for a cost-share opportunity to offset those costs. The application for the Fiscal Year 2026 Soil Health Financial Assistance Grant is open until August 29, 2025. Please review the Fiscal Year 2026 Request for Proposals (available in early August) before you apply.

Quick facts

- One of the first and only programs to reimburse for equipment.
- Covers purchase of new equipment, used equipment and parts to retrofit existing equipment.
- Awards range from \$500-\$45,000 (up to 50 percent cost share).
- Individual producers, producer groups and local government units are eligible to apply.
- Eligible equipment purchases must advance soil health in Minnesota.
- These grants are competitive. Awarded contracts will last for 12 months.

• This is a reimbursement grant. **No purchases can be made before a grant contract is fully executed (after funding notifications are made).**

• \$4,363,286 are allocated for distribution through the Soil Health Financial Assistance Program in Fiscal Year 2026. Grant awards will provide up to 50% cost-share, with a minimum award of \$500 and a maximum award of \$45,000.

For more information and to apply for the grant, visit <https://www.mda.state.mn.us/soil-health-grant>.

NCBA Endorses HELP Act to Support Livestock Haulers

On July 28, the National Cattleman's Beef Association (NCBA) urged support for the Hauling Exemptions for Livestock Protection (HELP) Act introduced by Rep. Jeff Hurd (R-CO). This legislation sup-

ports livestock haulers by protecting drivers from burdensome hours of service (HOS) and electronic logging device (ELD) mandates.

"When you are hauling cattle, you are dealing with livestock that must be protected from the elements and cannot be easily unloaded until you get to your destination. Livestock haulers need flexibility to complete their trips free from government mandates," said NCBA Policy Division Chair Skye Krebs, an Oregon rancher who hauls livestock and holds a Commercial Driver's License. "During the COVID-19 pandemic, haulers and ranchers like me were granted additional flexibility on hours of service and electronic logging devices. In that time, we proved that we could safely transport our livestock and also support the overall supply chain."

The HELP Act codifies HOS and ELD exemptions that were issued by the Federal Motor Carrier Safety Administration (FMCSA) for about two years during the pandemic. Since then, America's livestock haulers have been burdened by HOS rules again, but this legislation would reinstate permanent exemptions, providing the flexibility necessary to safely transport livestock.

Recently, FMCSA and the National Highway Traffic Safety Administration announced they are withdrawing a proposed rule to mandate speed limiters in trucks. This announcement was welcome news for livestock haulers, but HOS and ELD mandates continue to pose a threat to drivers. NCBA strongly supports the HELP Act and thanks Rep. Hurd for introducing it. NCBA urges Congress to pass this legislation.

President Trump Opens Australian Market to U.S. Beef

On July 23, the National Cattleman's Beef Association (NCBA) announced that for the first time in 20 years, Australia will accept ship-

ments of fresh and frozen U.S. beef, ending decades of bureaucratic red tape and prolonged negotiations that have prevented American cattle producers from accessing the Australian market. NCBA thanks President Donald J. Trump for delivering yet another trade win for America's cattle farmers and ranchers.

"For 20 years, U.S. beef was denied access to Australia while Australia exported \$29 billion of beef to U.S. consumers. The lack of two-way, science-based trade has been a sticking point for many years, and we are pleased that President Trump has successfully opened the Australian market to American beef," said NCBA President and Nebraska cattleman Buck Wehrbein. "NCBA has spent decades working to correct this trade imbalance and we are proud to have a President who is willing to fight for American farmers and ranchers, expand export markets, and fix unfair trade agreements across the world."

The U.S.-Australia Free Trade Agreement took effect in 2005 and was intended to allow U.S. beef to be sold in Australia. Over the last 20 years, Australia has used countless tactics to delay implementation of the agreement and prevent any shipments of fresh or frozen U.S. beef from entering Australia. Over the same 20-year period, Australia has sold \$28,759,340,461 worth of their beef in the United States.

"The United States is the gold standard for safe and delicious beef, and we have some of the highest animal health and food safety standards in the world," said NCBA Executive Director of Government Affairs Kent Bacus. "Opening the Australian market to American beef will benefit our producers at home, while also offering Australian consumers the opportunity to enjoy our high-quality beef. We greatly appreciate President Trump delivering another win for America's family farmers and ranchers."



ADVERTISE WITH US!

MINNESOTA STATE CATTLEMEN'S ASSOCIATION
CONTACT: kaitlyn@mnsca.org



FOCUSED ON LIVESTOCK FOCUSED ON YOUR OPERATION

Unique operations need unique solutions.

Agriculture focused solutions to fit any size farm, ranch, or agribusiness. Get the customized financing and financial services you need by contacting your local AgCountry office.

- Land and equipment loans
- PRF and LRP insurance
- Cash patronage program
- Operating loans
- Succession and retirement planning

AgCountry.com



Choice Cuts

e.g. **OmniFount 2**

save
TIME

save
YOUR
BACK

save
MONEY

save
WATER



OmniFount 1

OmniFount 3

Living the Ritchie Life.

The choice of what to cut back on is part of living a busy life. Provide fresh water for your animals, and have more for the other things. See what owning a Ritchie automatic waterer can do for you at www.ritchiefount.com.

Partner to the American Cattleman since 1921.

Proud to be a sponsor of:  National Cattlemen's Beef Association

Ritchie
Fresh Water
For Life™

MADE IN
AMERICA
SINCE 1921

Chad Carlson • 800-669-4038

2025 SUMMER TOUR PHOTOS



Merck Animal Health “minnow races” were once again a hit with attendees, with this year’s game in honor of Dr. Grant Crawford. Photo courtesy of Jason Steussy



Mac and Stacey Caughey showcase their operation, Caughey Cattle Co., during the Summer Tour. Photo courtesy of Jason Steussy



Tour attendees pictured at Kathrein Charolais. Photo courtesy of Jason Steussy



Vendors visit with attendees at Zapzalka Farms. Photo courtesy of Jason Steussy

The X Factor

The performance benefits of re-implanting without the hassle.

Two doses of high-performance growth. One simple labor-saving application.

That’s the power of X - REVALOR® -XS and -XH (trenbolone acetate and estradiol extended-release implants).



Stay ahead of new guidelines with the implant that delivers two doses in a single application.

REVALOR-XH IMPORTANT SAFETY INFORMATION:
Not approved for repeated implantation (re-implantation) with this or any other cattle ear implant in growing beef heifers fed in confinement for slaughter. Safety and effectiveness following re-implantation have not been evaluated. Do not use in beef calves less than 2 months of age, dairy calves, and veal calves. A withdrawal period has not been established for this product in pre-ruminating calves. Do not use in dairy cows or in animals intended for subsequent breeding. Use in these cattle may cause drug residues in milk and/or in calves born to these cows. Implant pellets subcutaneously in ear only. Any other location is a violation of Federal law. Do not attempt salvage of implanted site for human or animal food. Not for use in humans. Keep out of reach of children. For complete safety information, refer to the product label.

REVALOR-XS IMPORTANT SAFETY INFORMATION:
Do not use in beef calves less than 2 months of age, dairy calves, and veal calves. A withdrawal period has not been established for this product in pre-ruminating calves. Do not use in dairy cows or in animals intended for subsequent breeding. Use in these cattle may cause drug residues in milk and/or in calves born to these cows. Implant pellets subcutaneously in ear only. Any other location is a violation of Federal law. Do not attempt salvage of implanted site for human or animal food. Not for use in humans. Keep out of reach of children. For complete safety information, refer to the product label.



Scan the QR code to learn more.



MAHCattle.com • 800-521-5767
©2023 Merck & Co., Inc., Rahway, NJ, USA and its affiliates. All rights reserved. US-RVL-230500003



DAYS OF SUCCESS

MANAGING CATTLE NUTRITION IS KEY FOR HERD PERFORMANCE, HEALTH AND LONGEVITY.

EnergiLass® high-energy supplements and Framework 365 Mineral® have products that fit your cattle's needs.

SEPTEMBER 1 - OCTOBER 17

Save \$4

PER 250-LB TUB OF ENERGILOSS®

10% off

ON TOTAL ORDER OF ELIGIBLE MINERAL

Cooper Royer
Territory Sales Manager
cooper.royer@kentww.com • 515-577-4315



Parasite Control

Managing the little things can help make a big difference.



Reducing parasite burdens helps increase feed intake — and that can lead to heavier calves when it's time to sell.¹ Zoetis parasiticides help reduce parasite burdens by covering more of the important parasites and life stages² — more than any other portfolio on the market. It's the kind of coverage you need to help take care of the little things and set your herd up for success. To learn more, visit GetLessParasites.com.

Consult your veterinarian for assistance in the diagnosis, treatment, and control of parasitism.

¹ Hawkins JA. Economic benefits of parasite control in cattle. *Vet Parasitol.* 1993;46:159-173.

² Based on approved labels for Dectomax® Pour-On, Dectomax® Injectable and Valbazen® Suspension, compared with approved labels for Eprinex®, Ivomec® Injectable, LongRange®, Synanthic® Suspension, Safe-Guard® 10% Solution, and Cydectin® Injectable and Pour-On.

All trademarks are the property of Zoetis Services LLC or a related company or a licensor unless otherwise noted. Eprinex, Ivomec, LongRange and Synanthic are registered trademarks of Boehringer Ingelheim Vetmedica, Inc. Safe-Guard is a registered trademark of Intervet Inc. or an affiliate. Cydectin is a registered trademark of Elanco US Inc.

© 2021 Zoetis Services LLC. All rights reserved. GBF-00512



MSCA Keeps Farmfest Flavorful With Classic Beef Sandwiches

The MSCA was serving up beef sandwich meals at the beef booth again this year during Farmfest Aug. 5-7 near Redwood Falls, Minnesota. Together, with the help of volunteers and donations from American Foods Group and Bonanza Bean, the Cattlemen served thousands of sandwiches within the three days.

A special thank you goes to the dedicated “Farmfest Committee,” which has led this effort for roughly 15 years: Krist Wollum, Dick Pesek, Grant and Dawn Breitkreutz and Mark Malecek.

And of course, a big shoutout to every volunteer who pitched in to make this tradition a success — we truly couldn’t do it without you!



Farmfest attendee pictured going through the MSCA beef booth line with a beef sandwich.



MSCA President Jake Thompson visits with Minnesota Governor Tim Walz.



Pictured left to right: Rep. Paul Torkelson, Rep. Keith Allen, Minnesota Speaker of the House Lisa Demuth, Rep. Isaac Schultz, MSCA Executive Director Kaitlyn Root, MSCA Past President Grant Breitkreutz, MSCA President Jake Thompson, Rep. Harry Niska



Farmfest committee members pictured left to right: Dick Pesek, Mark Malecek, Dawn Breitkreutz, Grant Breitkreutz and Krist Wollum. This crew has done an outstanding job organizing Farmfest for the MSCA for the past 15 years!



Pictured left to right: Congressman Pete Stauber, Congressman Brad Finstad, MSCA President Jake Thompson, Deputy Secretary of the U.S. Department of Agriculture Stephen Vaden, MSCA Executive Director Kaitlyn Root



Pictured left to right: MSCA Executive Director Kaitlyn Root, MSCA Past President Grant Breitkreutz, Congresswoman Angie Craig, MSCA President Jake Thompson



Cattle First. Boehringer Ingelheim

CHOOSE A VACCINE AS PREMIER AS YOUR CALVES

The Pyramid® family of vaccines is a premier choice to fight against the viruses in the BRD complex – with the data to prove it.

1. THE FIRST CALF VACCINE LABELED TO PROTECT AGAINST BVDV TYPE 1B

- Provides a duration of immunity of at least 217 days against respiratory disease due to bovine viral diarrhea virus (BVDV) Type 1b – the most common strain in the U.S. today¹
- Contains the Singer strain – found to induce higher levels of BVDV Types 1a and 1b antibodies¹

2. PROVEN TO STIMULATE IMMUNITY IN THE FACE OF MATERNAL ANTIBODIES

- In a recent study, PYRAMID® 5 + PRESPONSE® SQ vaccines provided premier protection, including increased immune response and decreased disease severity, against BVDV Type 1b and *M. haemolytica* when 30-day-old calves were challenged five months after vaccination²
- Previous study showed PYRAMID 5 vaccination in one month old calves protected against clinical disease when challenged with BVDV Type 2, seven months following vaccination⁴
- 30-day-old calves vaccinated with PYRAMID 5 were protected from respiratory disease due to BRSV³

3. FORTIFIED WITH THE UNIQUE METASTIM® ADJUVANT

- Specifically designed to stimulate robust immunity – even when maternal antibodies are present²
- Boosts immune response by extending the time the immune system is exposed to the vaccine antigens



ADD PRESPONSE® SQ VACCINE FOR DUAL-ACTION PROTECTION AGAINST BACTERIAL PNEUMONIA.

PRESPONSE stimulates the immune system to fight *Mannheimia haemolytica* and prevents leukotoxins from damaging the lungs.

LEARN ABOUT RELENTLESS PROTECTION AT
PYRAMIDVACCINES.COM



**RANCH TO FEEDYARD
WE DELIVER
FOR YOUR NEEDS**

**HONORED TO SERVE THE CATTLE INDUSTRY SINCE 1994
CONTACT US! 507.648.3721**

**DRY CREEK
TRUCKING
INC.**
Lamberton, MN



[LEARN MORE](#)

Innovation, Quality, & Service Since 1965

**FOR ALL YOUR
AGRICULTURAL
PRECAST
NEEDS**

- FOOT BATHS
- BUNKER SILOS
- CATTLE GUARDS
- MANURE STORAGE
- GRAIN STORAGE
- WATER TANKS
- FEED BUNKS



www.wieserconcrete.com



(800) 325-8456



W3716 US Highway 10, Maiden Rock, WI 54750



Sign Up a New Member Today - Help MSCA Grow!

Minnesota State Cattlemen's Association/National Cattlemen's Beef Association

MSCA/NCBA Partnered Membership Application Form

Name _____ Phone _____ Email _____

YES I would like to receive the Policy Pen E-Bulletin

Address _____

City _____ State _____ Zip _____

Type Ops: Feeder Cow-Calf Seedstock Stocker Dairy Associate

Method of Payment: Check Credit Card Invoice Me

Credit Card Type: Master Card Visa Discover

Card # _____

Expiration Date ____/____/____ Signature _____

Make Checks Payable to: "MSCA" (No Cash Please)

Return Form & Payment To: MSCA Treasurer

PO Box 12, Maple Plain, MN 55359

Recruited By: _____

Questions Call: (763) 479-1011 or email: mnsca@mnsca.org

MN State Cattlemen's Association Dues \$100

Junior Dues \$25

Local Cattleman Association Dues (Optional)

Contact your local association to join

NCBA Membership Dues (Optional)

(Select the appropriate classification and add to MN State Cattlemen dues)

1-100 - \$170	Stocker/feeder - \$170 + (\$0.4307/hd) =
101-250 - \$340	
251-500 - \$510	Associate Dues
501-750 - \$736	Individual - \$170 (NCBA Dues →) _____
751-1000 - \$1,020	Business - \$226
1001-1250 - \$1,304	Student (24 or younger) - \$56
1251 - 1500 - \$1,586	
1501 - 1750 - \$1,870	
1751 - 2000 - \$2,154	Total Dues Enclosed This Membership _____