

What's Inside

MSCA President's Column	2
MSCA Council Chair Columns	2
Cattlemen's Calendar	2
MCW Column	4
Minnesota Beef Council	5
Wolf Delisting Update	10
MSCA Membership Form	12

Volume 10, Edition 2 - April-May 2010



The Minnesota Cattleman®

The Official Newspaper of the Minnesota State Cattlemen's Association



Lori Schott



Mark Malecek

MN Beef Council 2010 Elections Results

Minnesota's beef producers elected two new directors and returned three serving directors to the Beef Research and Promotion Council during recent elections. Newly elected directors include Lori Schott, from Mille Lac's County representing District 6 and Mark Malecek, from Redwood County representing District 7. Lori fills the seat vacated by Eli Berry and Mark fills the seat vacated by Dennis Swan. Both Berry and Swan decided to retire and not run for reelection.

Directors that ran for reelection and succeeded in retaining their seat on the council included; John Moon, Chippewa County representing district 4, Ronald Rinkel, Morrison County representing district 5 and Carol Abrahamson, Houston County representing district 9. (See pages 5 & 11 for related articles)

Residue Violator List

A List No Cattleman Should Be On!

USDA's Food Safety Inspection Service (FSIS) conducts tests for chemical residue including; antibiotics, sulfonamides, and various other drugs, pesticides and environmental chemicals in meat, poultry and egg products intended for human consumption. FSIS conducts those tests at the time of slaughter and makes the results available to the public on FSIS's website: www.fsis.usda.gov/Science/Chemistry/index.

The FSIS posts several lists on their website, the largest of which is called "Same Source Supplier - Residue Violator List." This report is issued weekly and identifies livestock suppliers that present animals for slaughter that were rejected at the processing plants due to failing residue testing. The detailed weekly report includes; name and address of seller of that animal, specie of animal, type & level of residue found, and where the animal was slaughtered. The report for the week ending April 22th, 2010 was 132 pages in length. (Continued on page 8)

FMD Outbreak!

Emergency culling of swine and cattle are underway in both South Korea & Japan due to an outbreak of Foot & Mouth Disease (FMD). (continued on page 10)

NEWS - TIME SENSITIVE MATERIAL

Annual Sponsors

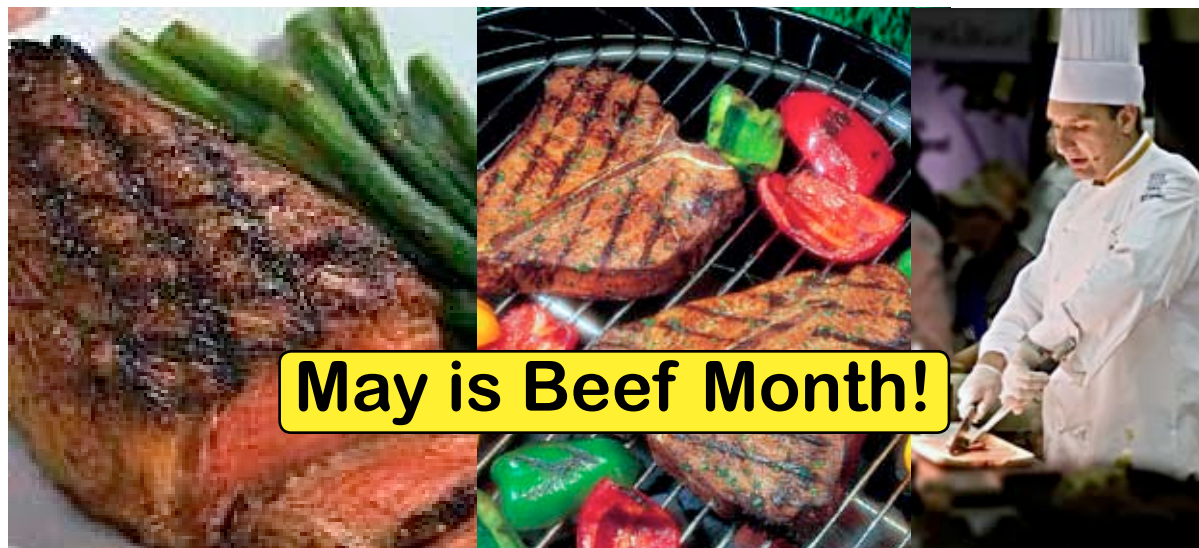
**MN Beef Council
American Foods Group
Long Prairie Packing
Central Livestock Assn.
Tri-Merit/Intervet Int.**

Final Notice



**If it says "Expired"
Please Renew**

Use membership form on page 12



May is Beef Month!

West Central Cattlemen to Host Minnesota's 2010 Summer Beef Tour

July 12th

MSCA BOD Qtrly Meeting
MSCA PAC Golf Outing
MSCA Steak Fry

July 13th

Minnesota Beef Tour
Beef Industry Trade Show

(See page 7 for details)

Wolves Kill School Teacher

This past March Candice Berner, a 32 year old school teacher was attacked and killed by wolves just outside the village of Chignik on the Alaskan Peninsula.

Berner was a special education teacher. She was working at Chignik Lake with the school's 23 students when she was killed shortly after school when she went for a jog. (continued page 4)

Local Producer Promotion Opportunities

May is Beef Month, the Summer Grilling Season is here! It's time for beef producers to begin to think about local opportunities to promote beef. Minnesota's Beef Council has a Local Producer Promotion Program that provides funding to beef and dairy groups to conduct product promotion activities. Each year, 20-25 local groups use this program to promote beef in their communities. (continued on page 4)

Wolf Depredation Statute Updated

MSCA's proposed changes to the state law dealing with domestic livestock killed by wolves were recently presented to Governor Pawlenty for signature. The changes were included in the omnibus ag policy bill that recently passed both the Minnesota House and Senate.

The changes to MN Statute 3.737 will provide for additional local resources to support the timely investigation of wolf attacks on livestock. Wolves killing domestic livestock in Minnesota remains a chronic problem.

In addition to a DNR Conservation Officer or UMN Extension Agents; now USDA/APHIS Wildlife Services personnel, a peace officer from the county sheriff's office, or a licensed veterinarian may also conduct the initial investigation of a suspected wolf attack on livestock. (Continued on page 3)

State Legislator's Finally Go Home!

The Minnesota State Legislators wrapped up the 2010 legislative session with a flurry and finally headed home. They failed to resolve the budget deficit in the final hours of the regular session. The Governor then called a brief special session to settle the final details of the budget issue.

The long standing deadlock between democrats and republicans (including the governor) over whether to solve the state budget deficit by cutting state spending or raising taxes continued right to the end. The solution reached in the brief special session accepted most of Governor Pawlenty's previous cuts he had made through the unallotment process. Democrats failed in an attempt to force through a large tax increase on Minnesota's.

The Minnesota Supreme Court threw a wild card on the table during the last few days of the session when they ruled the Governor's previous unallotment action unconstitutional. The court essentially cancelled roughly \$2.5 billion dollars of previous cuts the Governor had made through unallotment. That action left legislators with only a few days to resolve the huge new hole in current year budget.

Despite the turmoil that marked the end of the session agriculture did reasonably well this year. The Minnesota State Cattlemen's Association was successful in changing state law to increase the resources available to investigate suspected wolf attacks on livestock. See articles on pages 1, 2, 3, 9 & 11 for more details this year legislative session.

Membership - 148 New Members It's Now About Renewals!

MSCA is on track to increase membership again this year - *provided those that have not renewed yet, make that commitment.* Current new and renewed paid up membership stands at 851 members. That is only 80 members short of surpassing last year's 931 membership final number.

MSCA recruiters are doing their part. To date they have recruited 148 new MSCA members. That's outstanding and a testament to the dedication of those MSCA members and local cattlemen associations that have taken the time to approach a neighbor and ask them to join us in protecting and promoting Minnesota's Cattle Industry.

While we will continue to recruit new members at every opportunity, how much MSCA's membership will grow this year primarily rests in the hands of those members that have not renewed their MSCA membership yet this year.

See page 12 for the details on how your local cattlemen's association and region are doing on recruiting and renewals.

PRST STD
U.S. POSTAGE
PAID
PERMIT #265
BRAINERD, MN 56401